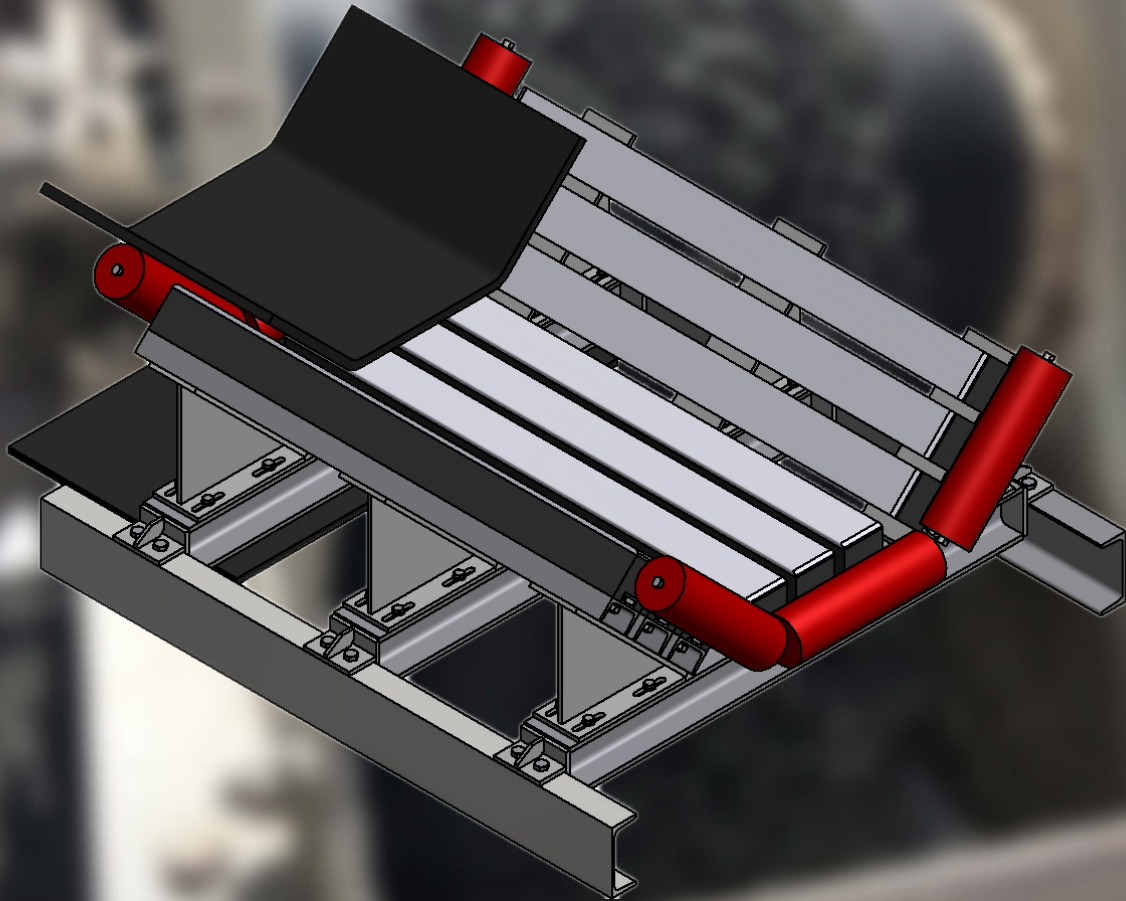




// ONE BRAND // ONE SOURCE // ONE SYSTEM

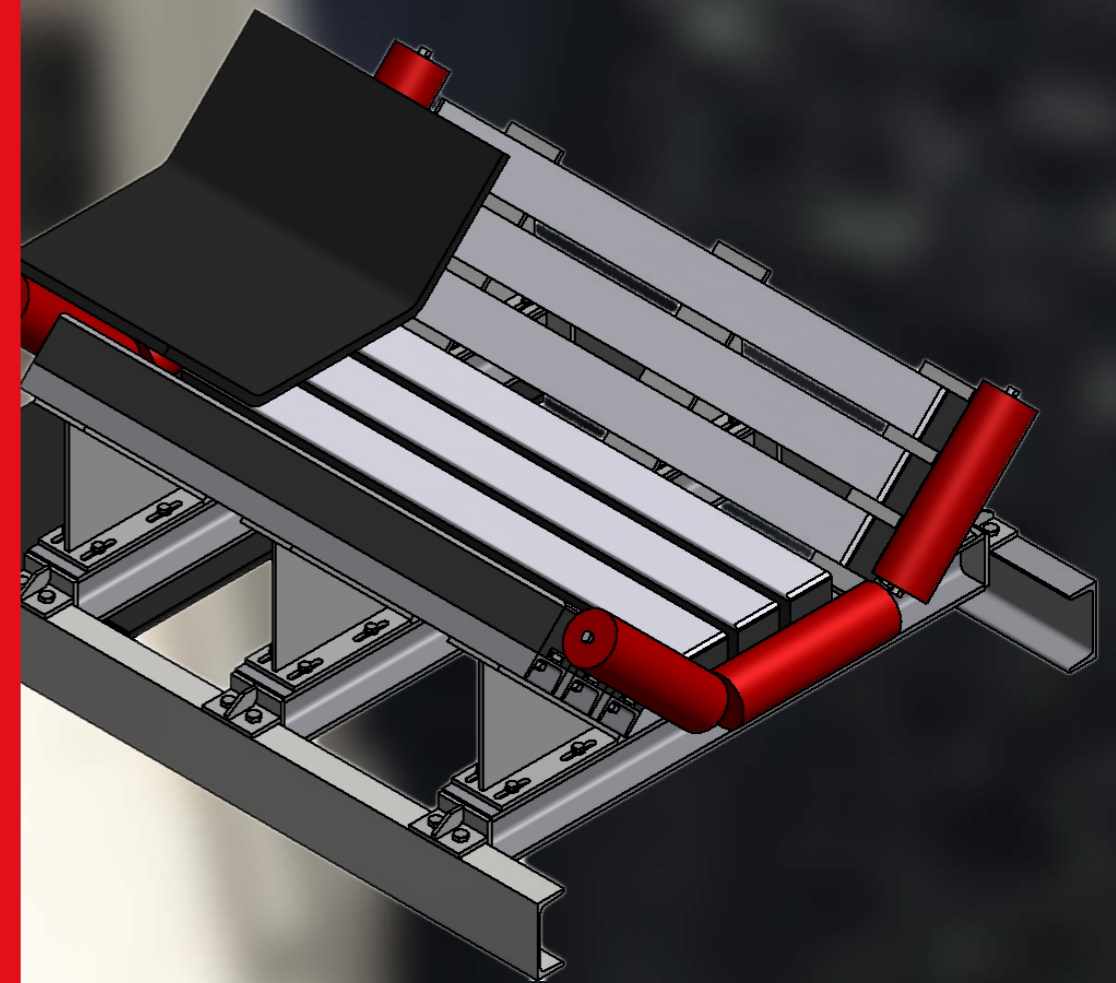


Feeding Systems

Our complete range of Feeding Systems.

Feeding Systems

REMASLIDE	4
Low friction impact bars.	
Impact Cradle	9
UNISLIDE	10
Low friction impact bars.	
Questionnaire	11



REMASLIDE impact bars

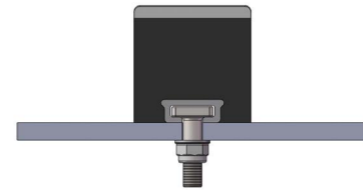
REMASLIDE impact bars absorb the drop energy of material impact through their proven REMA TIP TOP special rubber substrate. By fully supporting the conveyor belt across the feed points and transfer stations, damage of the belt will be avoided.

Properties

- Combination of UHMW-PE (ultra-high molecular weight polyethylene) and REMA TIP TOP special rubber
- Low friction between conveyor belt and REMASLIDE surface
- Beveled ends of the polyethylene layer to protect the conveyor belt
- Increases operating life of the belt/bar
- Reduction in energy requirement
- Easy and quick mounting by integrated aluminium profile with TT-Fastening Unit type I
- Distance between conveyor belt and impact bars must be at least 20 mm (when conveyor belt is not loaded)

Area of application

- Impact protection for conveyor belts at the material feed and transfer points
- Good sealing effect when used in conjunction with REMASKIRT



REMASLIDE Low Friction KG-04 with TT-Fastening Unit type I

REMASLIDE Low Friction

- Innovative, low friction sliding surface made of highly wear-resistant PE (10 mm, grey)
- Increases the service life by more than 30 % compared to other standard impact bars, as the sliding surface is made of UHMW-PE
- Elastic rubber base (approx. 40 Shore A)
- Recommendation: 4 pieces TT-Fastening Units per impact bar

Ref. No.	Designation	Dimensions	TT-Fastening Unit
539 0510	REMASLIDE LF KG-02	52 x 100 x 1 220 mm	I
539 0520	REMASLIDE LF KG-03	80 x 100 x 1 220 mm	I
539 0530	REMASLIDE LF KG-04	100 x 100 x 1 220 mm	I

REMASLIDE RED

- Low friction surface made of highly wear-resistant PE (12 mm, red)
- Increases the service life by more than 30 % compared to other standard impact bars, as the sliding surface is made of UHMW-PE
- Elastic rubber base (approx. 40 Shore A)
- Recommendation: 4 pieces TT-Fastening Units type IV per meter

Ref. No.	Designation	Dimensions	TT-Fastening Unit
539 0380	REMASLIDE LF KG-02	52 x 100 x 1500 mm	IV
539 0385	REMASLIDE LF KG-03	80 x 100 x 1500 mm	IV
539 0390	REMASLIDE LF KG-04	100 x 100 x 1500 mm	IV



REMASLIDE RED with TT-Fastening Unit type IV

REMASLIDE V

- Self-extinguishing, antistatic and moderate oil resistant
- Can be used in underground areas
- Highly wear-resistant PUR coat (15 mm, black)
- Elastic rubber base (approx. 60 Shore A)
- Recommendation: 4 pieces TT-Fastening Units per impact bar type IV
- German underground approval for rubber compound): LOBA No. 18.43.21-91-24
- Polish underground approval (for rubber compound): Dopuszczenie WUG Katowice No. B/1724/IV/2016
- German approval for the PUR layer

Ref. No.	Designation	Dimensions	TT-Fastening Unit
539 4730	REMASLIDE V KG-02	52 x 100 x 1 220 mm	IV
539 4740	REMASLIDE V KG-03	80 x 100 x 1 220 mm	IV
539 4750	REMASLIDE V KG-04	100 x 100 x 1 220 mm	IV



REMASLIDE V with TT-Fastening Unit type IV

REMASLIDE ATEX

- Antistatic
- Can be used in ATEX areas
- Low friction surface made of antistatic PE (10 mm, black)
- Elastic rubber base (approx. 50 Shore A)
- Recommendation: 4 pieces TT-Fastening Units per impact bar type IV

Ref. No.	Designation	Dimensions	TT-Fastening Unit
539 0420	REMASLIDE A KG-02	52 x 100 x 1 220 mm	IV
539 0440	REMASLIDE A KG-03	80 x 100 x 1 220 mm	IV
539 0400	REMASLIDE A KG-04	100 x 100 x 1 220 mm	IV
539 0445	REMASLIDE A KG-03-1500	80 x 100 x 1 500 mm	IV
539 0405	REMASLIDE A KG-04-1500	100 x 100 x 1 500 mm	IV



REMASLIDE ATEX with TT-Fastening Unit type IV

REMASLIDE PUR impact bars

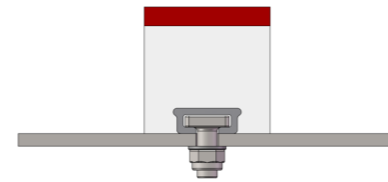
REMASLIDE PUR impact bars absorb the drop energy of the impacting material at very high drop heights. The elastic PUR base and the sliding surface made of polyurethane absorb the impact energy. Through full support of the whole surface of the conveyor belt at the feed points and transfer stations, damage of the belt is avoided. It also ensures better plant availability.

Properties

- Combination of PUR base and approx. 15 mm PUR sliding surface
- Homogeneous compound of surface and substructure allow highest load capacity
- At least 1.5 times longer durability compared to simple impact bars
- Low friction between conveyor belt and REMASLIDE PUR
- Beveled end faces of the sliding surface for gentle belt entry and exit
- Distance between conveyor belt and impact bars min. 20 mm (with unloaded conveyor)

Area of application

- Impact protection for conveyor belts at the material feed and transfer points
- Good sealing effect when used in conjunction with REMASKIRT
- Suitable for ATEX use



REMASLIDE PUR with TT-Fastening Unit type I



REMASLIDE PUR impact bars

- Innovative, low friction surface made of highly wear-resistant polyurethane (approx. 15mm, red)
- Elastic PUR base (approx. 55 Shore A, sliding surface approx. 90 Shore A)
- Recommendation: 4 or 5 pieces of TT-Fastening Units per bar type I

Ref. No.	Designation	Dimensions	TT-Fastening Unit
539 0551	REMASLIDE-BAR PUR KG-02 - 1220	52 x 100 x 1220 mm	I
539 0552	REMASLIDE-BAR PUR KG-03 - 1220	80 x 100 x 1220 mm	I
539 0553	REMASLIDE-BAR PUR KG-04 - 1220	100 x 100 x 1220 mm	I
539 0550	REMASLIDE-BAR PUR KG-02 - 1500	52 x 100 x 1500 mm	I
539 0555	REMASLIDE-BAR PUR KG-03 - 1500	80 x 100 x 1500 mm	I
539 0554	REMASLIDE-BAR PUR KG-04 - 1500	100 x 100 x 1500 mm	I

REMASLIDE ALOX

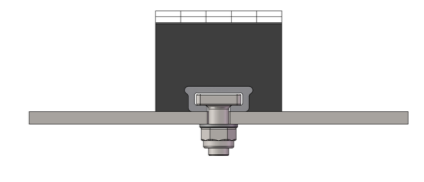
REMASLIDE ALOX impact bars absorb the drop energy of the material impact. A proven REMA TIP TOP special rubber substrate is combined with a hard and very smooth sliding surface made of ceramic. The wear-resistant ceramic ensures a very long service life. By fully supporting the conveyor belt across the feed points and transfer stations, damage of the belt is avoided.

Properties

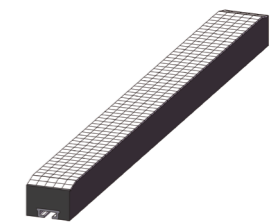
- Combination of rubber base and 4 mm ceramic sliding surface for use with particularly hard and abrasive materials (sinter, basalt, ores, etc.)
- Outstanding hot vulcanization of the 20x20 mm ceramic tiles with the rubber base
- At least 3 times longer lifetime compared to known impact bars
- Low friction between conveyor belt and REMASLIDE ALOX sliding surface
- Beveled end faces for gentle belt entry and exit
- Easy and quick mounting by integrated aluminum profile with TT-Fastening Unit type I
- Distance between conveyor belt and impact bar must be at least 20 mm (when conveyor belt is not loaded)

Area of application

- Impact protection for conveyor belts at the material feed and transfer points
- For bulk material up to 50 mm and drop heights up to 3 m
- Good sealing effect when used in conjunction with REMASKIRT



REMASLIDE ALOX with TT-Fastening Unit type I



REMASLIDE ALOX

- Innovative, low friction and abrasionresitant surface made of highly wear-resistant ceramic (4 mm)
- Elastic rubber base (approx. 40 Shore A)
- Recommendation: 4 to 5 pieces TT Fastening Units per bar type I

Ref. No.	Designation	Dimensions	TT-Fastening Unit
539 0850	REMASLIDE ALOX KG-02-1220	52 x 100 x 1220	I
539 0855	REMASLIDE ALOX KG-03-1220	80 x 100 x 1220	I
539 0860	REMASLIDE ALOX KG-04-1220	100 x 100 x 1220	I
539 0870	REMASLIDE ALOX KG-02-1500	52 x 100 x 1500	I
539 0875	REMASLIDE ALOX KG-03-1500	80 x 100 x 1500	I
539 0880	REMASLIDE ALOX KG-04-1500	100x 100 x 1500	I

TT-Fastening Units

TT-Fastening Units I

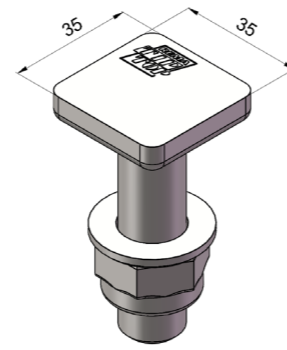
- Torque: 90 Nm recommended
- Consists of forged TT-Fasteners with washer and self-locking nut
- Recommendation: 4 pieces TT-Fastening Units per impact bar

Ref. No.	Designation	Dimensions
539 3620	TT-Fastening Unit I	M 12 x 60 mm
539 3610	TT-Fastening Unit I	M 12 x 40 mm
539 1006	TT-Fastening Unit I	M 16 x 40 mm
539 1013	TT-Fastening Unit I	M 16 x 60 mm
539 1020	TT-Fastening Unit I	M 16 x 80 mm

TT-Fastening Units IV

- Torque: 60 Nm recommended
- Consists of forged TT-Fasteners with washer and self-locking nut
- Recommendation: 4 pieces TT-Fastening Units per impact bar

Ref. No.	Designation	Dimensions
539 3580	TT-Fastening Unit IV	M 12 x 40 mm
539 3590	TT-Fastening Unit IV	M 12 x 60 mm
539 3561	TT-Fastening Unit IV	M 16 x 40 mm
539 3468	TT-Fastening Unit IV	M 16 x 60 mm
539 3475	TT-Fastening Unit IV	M 16 x 80 mm



TT-Fastening Unit I



TT-Fastening Unit IV

Impact cradle

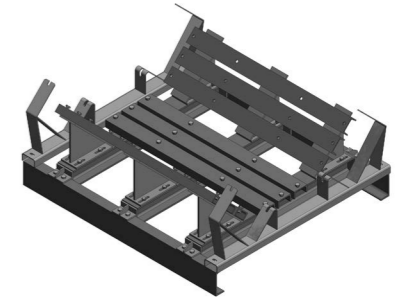
REMA TIP TOP impact cradles complete the portfolio for feeding systems and can be used in conjunction with the REMASLIDE or UNISLIDE impact bars.

Properties

- Very robust and proven design
- Side panels can be adjusted for optimal adaptation to the conveyor belt trough
- Available for impact bars in lengths of 1,220 mm and 1,500 mm
- The standard version for the length 1,220 mm is fixed with 4 supports, the length 1,500 mm with 5 supports
- Ready-to-install delivery incl. optional impact bars

Area of application

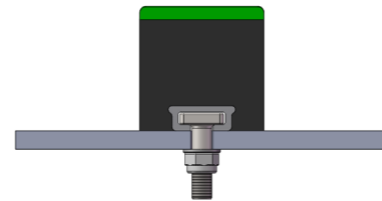
- Through full support of the whole surface of the conveyor belt in the impact cradle (cradle + impact bars) at the feed points and transfer stations, damage of the belt is avoided.



Impact cradle

UNISLIDE impact bars

UNISLIDE impact bars absorb the drop energy of material impact through their special rubber substrate. By fully supporting the conveyor belt across the feed points and transfer stations, damage of the belt will be avoided.



UNISLIDE with TT-Fastening Unit I

Properties

- Combination of polyethylene (PE) and special rubber
- Beveled ends of the polyethylene layer to protect the conveyor belt
- Easy and quick mounting by integrated steel profile with TT-Fastening Unit type IV
- Distance between conveyor belt and impact bars must be at least 20 mm (when conveyor belt is not loaded)

Area of application

- Impact protection for conveyor belts at the material feed and transfer points
- Good sealing effect when used in conjunction with UNISKIRT

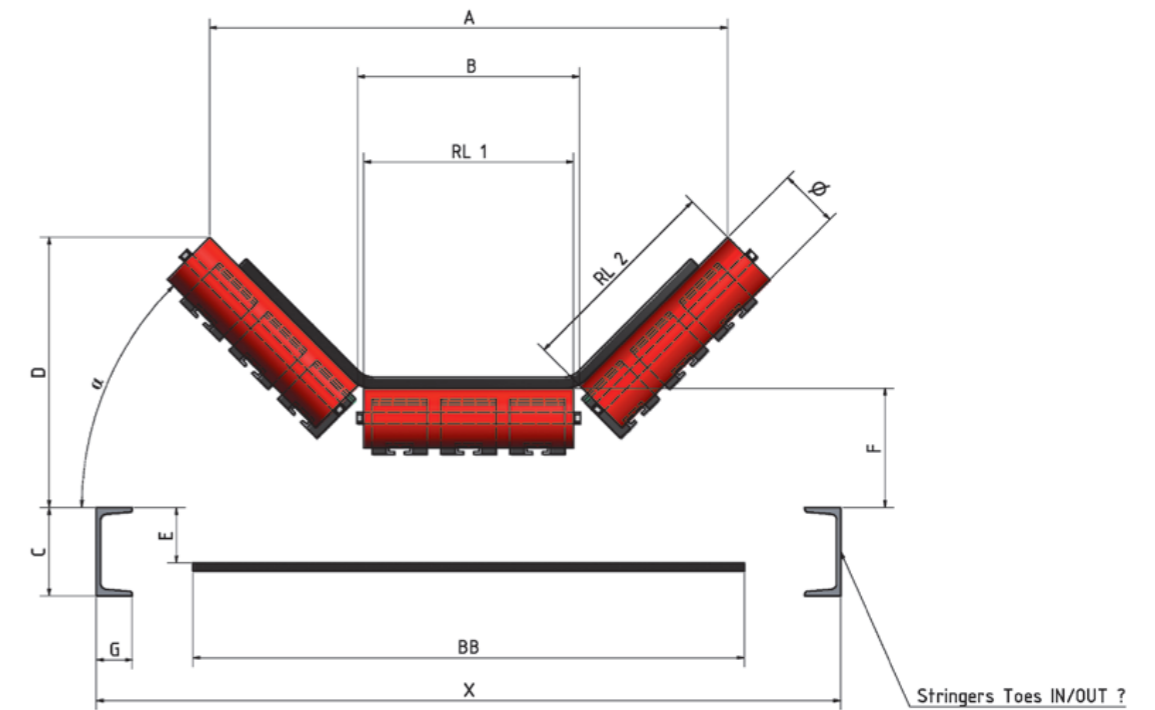
UNISLIDE

- Surface made of polyethylene (12.5 mm, green)
- Elastic rubber base (approx. 45 Shore A)

- Recommendation: 4 pieces TT-Fastening Units per impact bar

Ref. No.	Designation	Dimensions	TT-Fastening Unit
539 9966	UNISLIDE 02	50 x 100 x 1 220 mm	I
539 9965	UNISLIDE 03	75 x 100 x 1 220 mm	I
539 9964	UNISLIDE 04	100 x 100 x 1 220 mm	I

Customer:	Contact person:
Phone:	Fax:
Address:	Country (representation):
	E-Mail:



A	a
B	RL1
C	RL2
D	Ø
E	BB
F	X
G	

Remarks:

.....

.....

.....

.....

.....

Place and date	Name	Signature
----------------	------	-----------

LEGAL NOTICE

Copyright © 2020 REMA TIP TOP AG

All information is given to the best of our knowledge. All specifications are to be considered non-binding information. Any claim for damages of any kind is excluded. We reserve the right to change technical specifications without prior notice, provided that they ensure product improvement. The information presented is based on technical experience but does not guarantee a product's suitability for specific applications, and does not relieve the users of the responsibility to undertake their own testing, including where any third-party trademark rights are concerned. For special applications and operating conditions with regard to temperature, UV light, ozone, acids and alkaline solutions, dynamic and static forces, tensions, elongations and other influences, contact your local REMA TIP TOP distributor for technical advice.

Operating and working instructions, product information and general instructions on the vulcanization properties of natural and synthetic rubber should be followed carefully. The mechanical and physical values presented for our products only apply to the material listed (without bonding layer and without fabric) based on the accompanying inspections for approval; these represent statistical product data, but not guaranteed product properties. Detailed technical data sheets for each single product are available upon request. The weight indications (kg/m², kg/m, etc.) solely represent statistical values and are not necessarily identical to the actual weights. The weights indicated are merely guidelines for the handling, transport and application of our products. The dimension tolerances are based on part 5 of DIN 7715, classification P3 (admissible dimension tolerances for sheets) and DIN ISO 3302-1, classification M4 (molded parts made of soft-rubber). Other tolerances of specific products for special applications are subject to a mutual agreement and must be stipulated in a special contract. Products containing hazardous substances are labeled in accordance with the regulations (EG) No. 1907/2006 for the


classification, packaging and labeling of hazardous materials and preparations.

In order to preserve product properties, the storage conditions indicated in DIN 7716 should be followed (including storing the product in the original package and in an area that is dry, cool and dark).

Products printed in bold are normally available from stock.

Talk to our team today

 sales@rema-tiptop.com.au

 rema-tiptop.com.au

 **Beresfield (Head Office)**

02 4935 0200
79 Elwell Close,
Beresfield, NSW 2322

Brisbane

07 3710 8833
52 Wentworth Place,
Northgate, QLD 4014

Mackay

07 4953 9100
29-33 Maggiolo Drive,
Paget, QLD 4740

Perth

08 6253 1900
102 Kurnall Road,
Welshpool, WA 6106

Dandenong

03 8786 3333
2 Venture Court,
Dandenong South, VIC 3175

Adelaide

08 8169 2850
11 Lafitte Road,
Wingfield, SA 5013

Newman

08 6253 1900
21 Pardoo Street,
Newman, WA 6753

Gladstone

07 3710 8820
3 McCabe Street,
Gladstone, QLD 4680



// ONE BRAND // ONE SOURCE // ONE SYSTEM