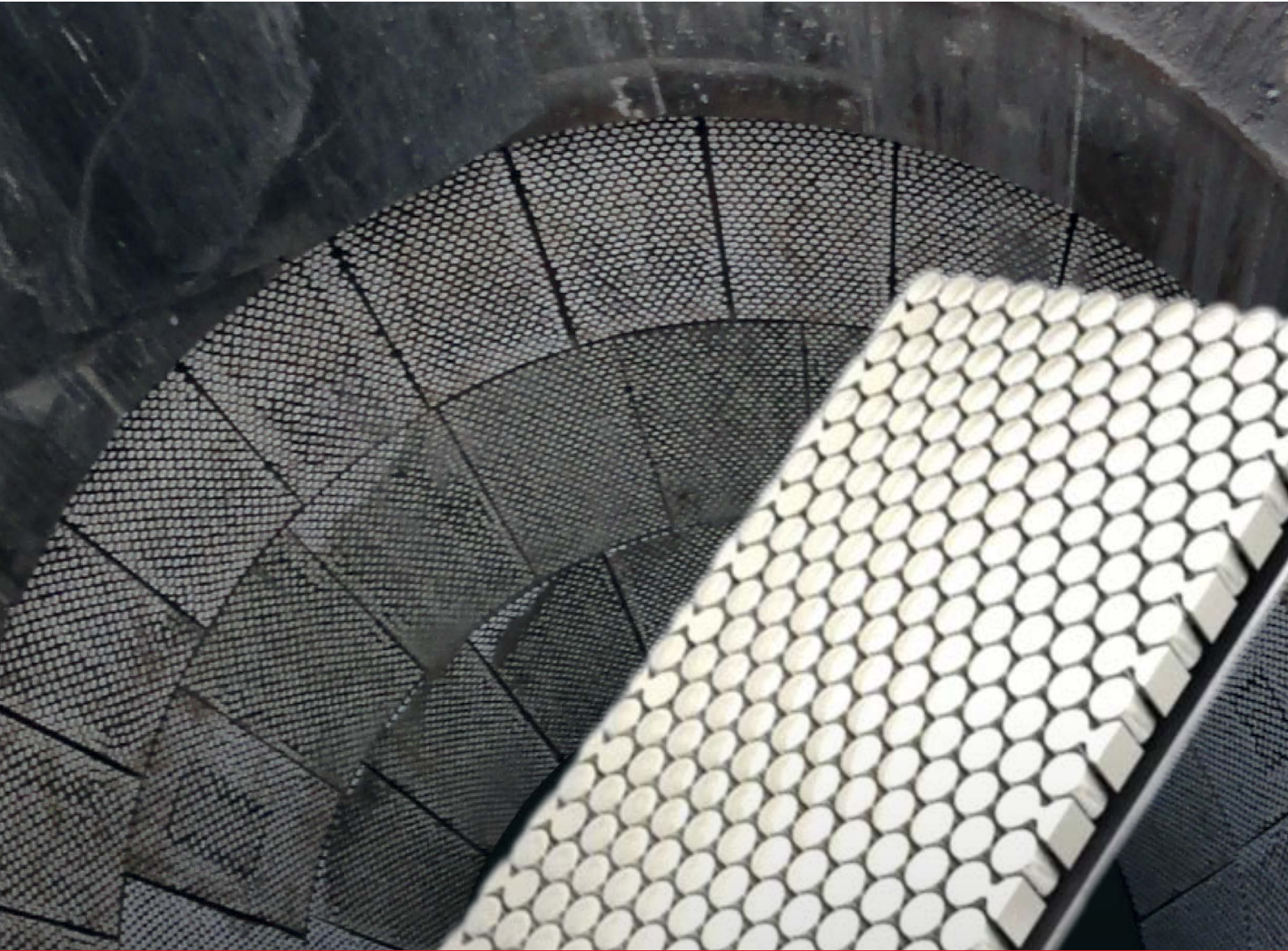




// ONE BRAND // ONE SOURCE // ONE SYSTEM



Heavy Wear Protection

Our complete range of Heavy Wear Protection products.

Heavy Wear Protection

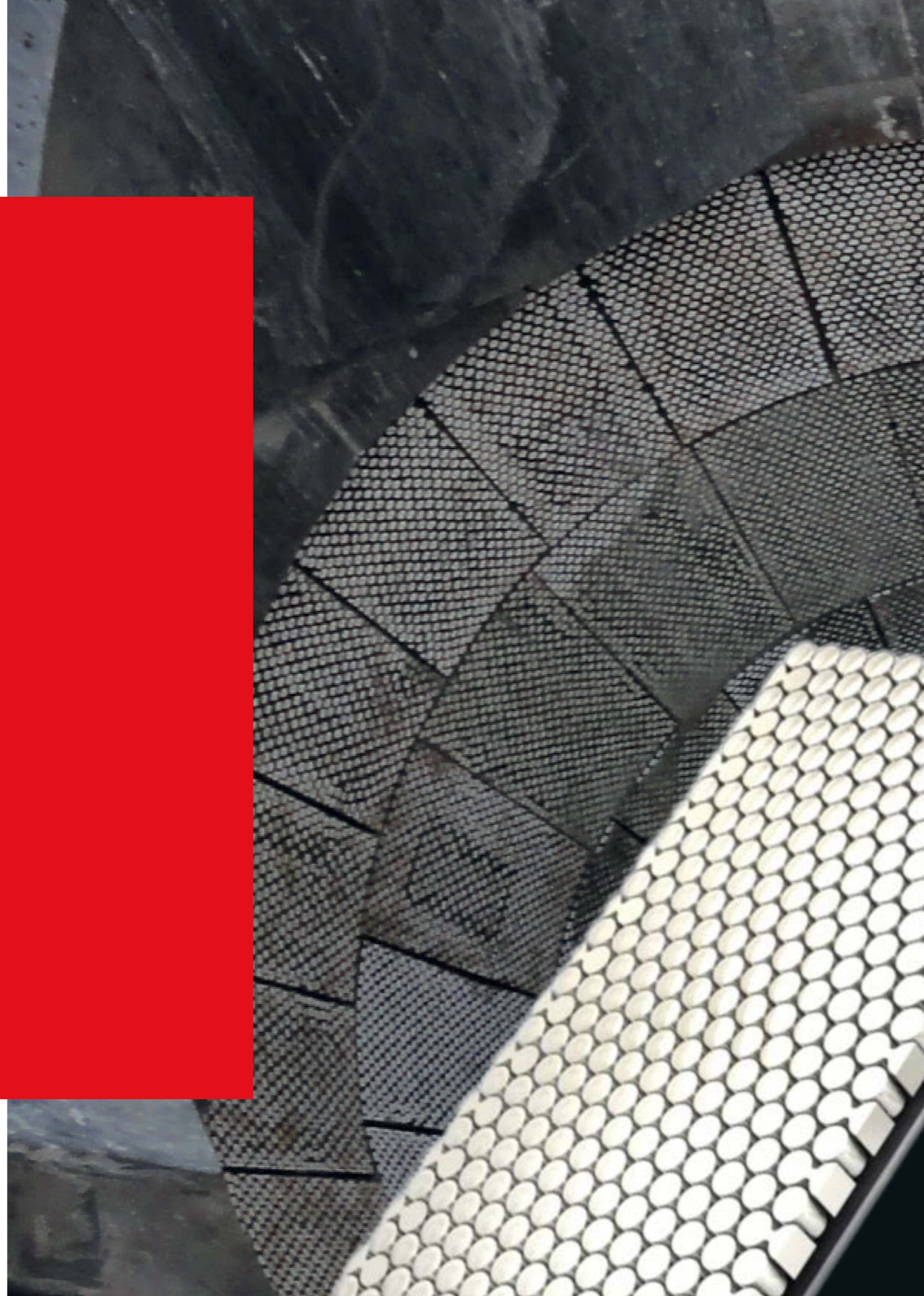
REMALOX 1

Ceramic/rubber lining material.

Special Rubber Elements 6

Heavy wear protection special rubber elements.

Questionnaire 14



HEAVY WEAR PROTECTION
REMALOX – Ceramic/rubber lining material

REMALOX – Ceramic/rubber lining material

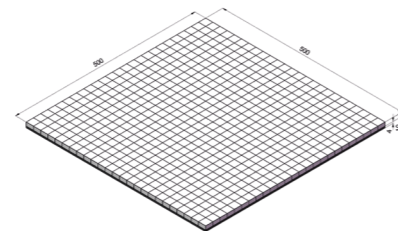
REMALOX is a composite construction of highly wear-resistant 92 %-Al₂O₃ ceramic tiles (square, rectangular or hexagonal „SW“) vulcanized in special rubber with CN bonding layer.

Properties

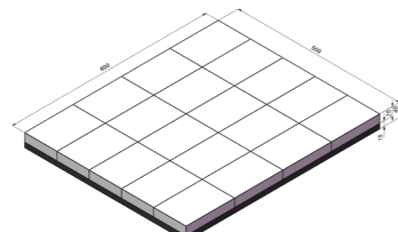
- CN bonding layer provides fast and longlasting adhesion
- Highest abrasion resistance
- Reduces operating costs
- Long service life increases the efficiency of your equipment
- Good resistance against weather

Area of application

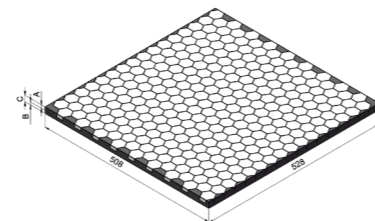
- Lining against extreme wear through abrasion at high speeds
- For simple to medium duty applications in mining, gravel, sand and stone breaking mills and other industrial sectors
- In applications like pipelines, vibratory feeders, cyclones, skips, bunkers, chutes, loading points, slides, hoppers, silos



539 9022



539 9039



539 9046

REMALOX

Specifications

Polymer basis	NR/BR/SBR	DIN ISO 1629
Specific weight	1.12 g/cm ³	DIN EN ISO 1183-1
Hardness	62 Shore A	DIN ISO 7619-1
Colour	Black	

Ref. No.	Designation	Dimensions	Dimensions of ceramic tiles	Weight
539 9015	REMALOX 4/4	8 x 500 x 500 mm	4 x 20 x 20 mm	5 kg
539 9022	REMALOX 10/4	14 x 500 x 500 mm	10 x 20 x 20 mm	10 kg
539 9021*	REMALOX 10/4	14 x 1000 x 1000 mm	10 x 20 x 20 mm	40 kg
539 9039*	REMALOX 25/15	40 x 500 x 600 mm	25 x 100 x 150 mm	32 kg
539 9046*	REMALOX HEX 6/6	12 x 510 x 525 mm	SW 32 x 6 mm	7 kg
539 9053	REMALOX SW 12/8	20 x 510 x 525 mm	SW 32 x 12 mm	12 kg

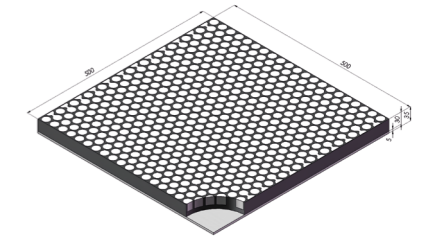
Note: Other sizes and configurations available upon request.

* Special order, contact your local REMA TIP TOP representative for item availability.

HEAVY WEAR PROTECTION
REMALOX – Ceramic/rubber lining material

REMALOX HD – Ceramic/rubber material

REMALOX HD is a composite construction of highlywear-resistant 92 %-Al₂O₃ ceramic cylinders hot-vulcanized in special rubber on a 5mm S235 (St-37) metal layer, which enables a secure fitting by means of stud bolt. Available in three different thicknesses (35 mm, 55mm, 75 mm).



REMALOX HD 35

Properties

- Highest abrasion resistance
- Absorption of impact energies
- Easy, flexible and fast application with secure fastening
- Reduces operating costs
- Long service life increases the efficiency of your equipment
- Easy replacement
- Good resistance against weather

Area of application

- Lining against extreme wear through impact and abrasion at high speeds
- Lining of material transfer stations with low impact angles
- For heavy to medium duty applications in mining, gravel, sand and stone breaking mills and other industrial sectors
- In applications like pipelines, vibratory feeders, cyclones, skips, bunkers, chutes, loading points, slides, hoppers, silos, etc.

REMALOX HD

Specifications

Polymer basis	NR/BR/SBR	DIN ISO 1629
Specific weight	1.12 g/cm ³	DIN EN ISO 1183-1
Hardness	62 Shore A	DIN ISO 7619-1
Colour	Black	

Ref. No.	Designation	Dimensions	Dimensions of ceramic tiles	Weight
539 9000*	REMALOX HD 35	35 x 300 x 300 mm	Ø 20 x 20 mm	9.8 kg
539 8970	REMALOX HD 35	35 x 250 x 500 mm	Ø 20 x 20 mm	13.7 kg
539 8920*	REMALOX HD 35	35 x 400 x 400 mm	Ø 20 x 20 mm	17.3 kg
539 8980	REMALOX HD 35	35 x 500 x 500 mm	Ø 20 x 20 mm	26.7 kg
539 3800*	REMALOX HD 55	55 x 250 x 500 mm	Ø 20 x 35 mm	28.6 kg
539 3810*	REMALOX HD 55	55 x 500 x 500 mm	Ø 20 x 35 mm	56.8 kg
539 3215*	REMALOX HD 75	75 x 250 x 500 mm	Ø 30 x 50 mm	26.8 kg
539 3200	REMALOX HD 75	75 x 600 x 300 mm	Ø 30 x 50 mm	38.7 kg
539 3370*	REMALOX HD 75	75 x 500 x 500 mm	Ø 30 x 50 mm	59.8 kg

Note: Other sizes and configurations available upon request.

* Special order, contact your local REMA TIP TOP representative for item availability.

HEAVY WEAR PROTECTION Special rubber elements

KG bars

KG bars with rubber quality REMALINE 70 with excellent resistance against wear in dry conditions and impact energy. Installation by means of vulcanized fastening profile and TT-Fastening Unit.

Properties

- Safe protection against abrasion in addition to impact energies with large-size bulk material
- Easy, flexible and fast application with secure fastening
- Reduces operating costs
- Long service-life increases the efficiency of your equipment
- Easy replacement
- Good resistance against weather

- Also available in V quality (self-extinguishing)

Area of application

- In applications with abrasion at high speeds
- For medium to heavy duty applications in mining, gravel, sand and stone breaking mills and other industrial sectors
- In applications like bunkers, chutes, loading points

KG-02/KG-03/KG-06/KG-08



KG-04/KG-05/KG-07



KG-01



KG-09/KG-10



WKG-01

KG bars

Specifications

Polymer basis	NR/BR	DIN ISO 1629
Specific weight	1.09 g/cm ³	DIN EN ISO 1183-1
Hardness	63 Shore A	DIN ISO 7619-1
Colour	Black	

Ref. No.	Designation	Dimensions	Weight	TT-Fastening Unit
539 0014	KG bars KG-01	50 x 100 x 2 500 mm	13 kg	I
539 0021	KG bars KG-02	42 x 100 x 2 500 mm	12 kg	I
539 0038	KG bars KG-03	80 x 100 x 2 500 mm	22.5 kg	I
539 0045	KG bars KG-04	100 x 100 x 2 500 mm	28 kg	II
539 0052	KG bars KG-05	100 x 150 x 2 500 mm	42 kg	II
539 0069	KG bars KG-06	60 x 100 x 2 500 mm	16 kg	I
539 0076	KG bars KG-07	150 x 150 x 2 500 mm	62 kg	II
539 0083	KG bars KG-08	80 x 70 x 2 500 mm	16 kg	I
539 0090	KG bars KG-09	40 x 40 x 1 000 mm	2.3 kg	III
527 2008	KG bars KG-10	50 x 50 x 2 500 mm	8.5 kg	III
539 0100	KG bars WKG-01	36 x 100 x 2 500 mm	9 kg	I

Note: Other sizes and configurations available upon request.

HEAVY WEAR PROTECTION Special rubber elements

ZP bars

ZP bars with rubber quality REMALINE 70 with excellent resistance against wear in dry conditions and impact energy. The profile enables a compensation of unfavourable impact angles (for rubber: 10° - 50°). Installation by means of vulcanized fastening profile made of aluminium and TT-Fastening Unit.

Properties

- Safe protection against abrasion in addition to impact energies with large-size bulk material
- Easy, flexible and fast application with secure fastening
- Reduces operating costs
- Long service-life increases the efficiency of your equipment
- Easy replacement
- Good resistance against weather

Area of application

- In applications with abrasion at high speeds
- Material transfer points with unfavorable angle of impact
- For medium to heavy duty applications in mining, gravel, sand and stone breaking mills and other industrial sectors
- In applications like bunkers, chutes, loading Points



ZP bars

ZP bars

Specifications

Polymer basis	NR/BR	DIN ISO 1629
Specific weight	1.09 g/cm ³	DIN EN ISO 1183-1
Hardness	63 Shore A	DIN ISO 7619-1
Colour	Black	

Ref. No.	Designation	Dimensions	Weight	TT-Fastening Unit
539 0148	ZP bars ZP-100	100 x 130 x 2 500 mm	29 kg	II
539 0155	ZP bars ZP-150	150 x 190 x 2 500 mm	60 kg	II

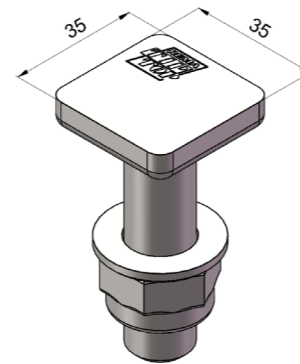
HEAVY WEAR PROTECTION Special rubber elements

TT-Fastening Units

TT-Fastening Units I

- Torque: 90 Nm
- Consists of forged TT-Fasteners with washer and self-locking nut
- Recommendation: 4 pieces TT-Fastening Units per meter

Ref. No.	Designation	Dimensions
539 1006	TT-Fastening I	M 16 x 40 mm
539 1013	TT-Fastening I	M 16 x 60 mm
539 1020	TT-Fastening I	M 16 x 80 mm
539 1037	TT-Fastening I	M 16 x 100 mm
539 1044	TT-Fastening I	M 16 x 120 mm

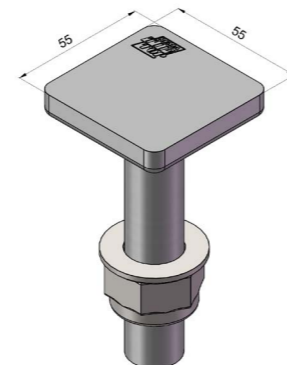


TT-Fastening Unit I

TT-Fastening Units II

- Torque: 150 Nm
- Consists of forged TT-Fasteners with washer and self-locking nut
- Recommendation: 4 pieces TT-Fastening Units per meter

Ref. No.	Designation	Dimensions
539 1068	TT-Fastening II	M 20 x 60 mm
539 1075	TT-Fastening II	M 20 x 80 mm
539 1082	TT-Fastening II	M 20 x 100 mm
539 1099	TT-Fastening II	M 20 x 120 mm

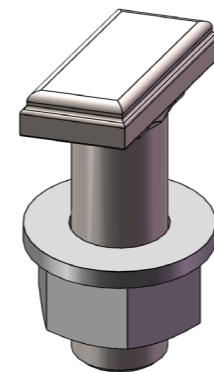


TT-Fastening Unit II

TT-Fastening Units III

- Torque: 15 Nm
- Consists of forged TT-Fasteners with washer and self-locking nut
- Recommendation: 4 pieces TT-Fastening Units per meter

Ref. No.	Designation	Dimensions
539 1460	TT-Fastening III	M 10 x 30 mm
539 1477	TT-Fastening III	M 10 x 60 mm



TT-Fastening Unit III

HEAVY WEAR PROTECTION Special rubber elements

Serrated profile plates

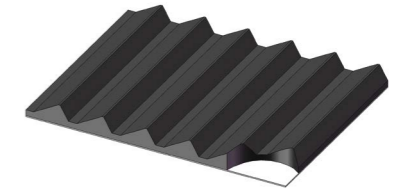
Serrated profile plates ZP with rubber quality REMALINE 70 with excellent resistance against wear in dry conditions and impact energy. The profile enables a compensation of unfavourable impact angles (for rubber: 10° - 50°).

Properties

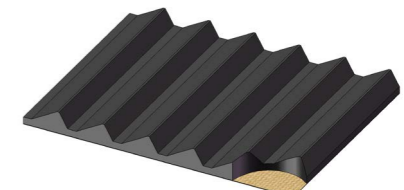
- Safe protection against abrasion in addition to impact energies with large-size bulk material
- Easy, flexible and fast application with secure fastening
- Reduces operating costs
- Long service-life increases the efficiency of your equipment
- Easy replacement
- Good resistance against weather

Area of application

- Material transfer points with problematic impact angle
- Impact aprons and elastic impact curtains



ZP 15 A/ZP 35 A/ZP 55 A



ZP 15 B/ZP 35 B/ZP 55 B

Serrated profile plate ZP A

REMALINE 70 serrated anti-wear rubber on S235 (St-37) metal backing.

Specifications

Polymer basis	NR/BR	DIN ISO 1629
Specific weight	1.09	DIN EN ISO 1183-1
Hardness	63 Shore A	DIN ISO 7619-1
Colour	Black	

Ref. No.	Designation	Dimensions	Weight
539 4278	Serrated profile plate ZP-15 A	15 x 500 x 2 520 mm	42 kg
539 4292	Serrated profile plate ZP-35 A	35 x 500 x 2 520 mm	59 kg
539 4319	Serrated profile plate ZP-55 A	55 x 500 x 2 486 mm	72 kg

Serrated profile plate ZP B

REMALINE 70 serrated anti-wear rubber fabric reinforced (EP 160) and equipped with CN bonding layer.

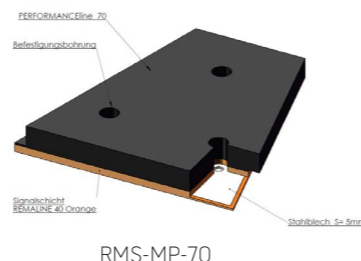
Ref. No.	Designation	Dimensions	Weight
539 4285	Serrated profile plate ZP 15-B	15 x 500 x 2 495 mm	17 kg
539 4302	Serrated profile plate ZP 35-B	35 x 500 x 2 495 mm	32 kg
539 4326	Serrated profile plate ZP 55-B	55 x 500 x 2 461 mm	47 kg

HEAVY WEAR PROTECTION Special rubber elements



RMS-MP-70 – Modular wear protection system

RMS-MP-70 modules in one size of 300/600x600 mm. Interconnection with overlap system. The modules have a trapezoidal shape. Highly wear-resistant rubber grade REMA PERFORMANCE line 70 and REMALINE 40 orange as a signal layer on 5 mm metal backing S235 (St-37) hot vulcanized. Thickness of the Remaline 40 orange signal layer depends on the total thickness of the RMS-MP-70 module. Mounting holes are already inserted at the specified distance. The vulcanized metal backing plate prevents fine material from settling under the lining and allows secure fastening.



Properties

- Safe protection against impact due to dry, sharp-edged material
- Better stability of the overall armor and prevents the penetration of fine material between the modules through overlap connection system
- Trapezoidal shape reduces wear (leachings at seams)
- Long service life leads to increased system availability

- Simple, flexible and quick installation with secure attachment
- Easy replacement
- Optimal surface protection with wear indicator (signal layer)
- Precise maintenance planning possible (preventive maintenance)
- Reduction of storage and thus operating costs
- Reduction of noise pollution
- Vibration damping
- Weatherability

Area of application

- Highest wear resistance in applications with impact and abrasion wear
- Very heavy to medium heavy duty mining, quarries, sand and gravel works and other bulk industries
- E.g. dump truck bodies, primary bunkers, hoppers, chutes, loading points, feeders, funnels, silos, etc., which are subject to high wear and noise

RMS-MP-70

Specifications

Polymer basis	NR/BR	DIN ISO 1629
Specific weight	1.12 g/cm ³	DIN EN ISO 1183-1
Hardness	65 Shore A	DIN ISO 7619-1
Colour	Black	

Ref. No.	Designation	Thickness	Weight	Dimensions	REMA PERFORMANCE line 70	REMALINE 40 orange
539 4512	RMS-MP-70-R; 40 mm	40 mm	21 kg	40 x 300 / 600 x 600 mm	30 mm	10 mm
539 4513	RMS-MP-70-L; 40 mm	40 mm	21 kg	40 x 300 / 600 x 600 mm	30 mm	10 mm
539 4530	RMS-MP-70-BUNDLE; 40 mm (10x RMS-MP-70-R, 10x RMS-MP-70-L, Rubber cord)					
539 4510	RMS-MP-70-R; 80 mm	80 mm	32 kg	80 x 300 / 600 x 600 mm	60 mm	20 mm
539 4511	RMS-MP-70-L; 80 mm	80 mm	32 kg	80 x 300 / 600 x 600 mm	60 mm	20 mm
539 4540	RMS-MP-70-BUNDLE; 80 mm (10x RMS-MP-70-R, 10x RMS-MP-70-L, Rubber cord)					

Note: Other sizes and configurations available upon request. Special elements available: Ceramic, oil, heat, polyurethane, UHQPE.

HEAVY WEAR PROTECTION Special rubber elements

REMASTEEL 60 – Rubber plates with metal backing

REMASTEEL plates with rubber quality REMALINE 60 with excellent resistance against wear in dry conditions and impact energy. A 3 mm S235 (St-37) metal backing hot vulcanized on the undersurface enables a easy fitting on the application areas by means and prevents dust and material spillage.



Properties

- Safe protection against abrasion in addition to impact energies with large-size bulk material
- Easy, flexible and fast application with secure fastening
- Reduction of operating costs
- Long service-life increases the efficiency of your equipment
- Easy replacement possible
- Noise and vibration reducing
- Good resistance against weather

Area of application

- Highest resistance for applications with impact energies and abrasion
- For heavy to medium duty applications in mining, gravel, sand and stone breaking mills and other industrial sectors
- In applications like SKW bodies, bunkers, chutes, loading points, slides, hoppers, silos, etc., which are subject to wear and noise influences

REMASTEEL 60

Specifications

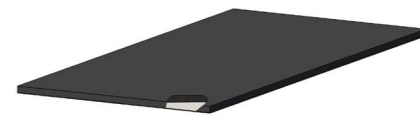
Polymer basis	BR/IR/SBR	DIN ISO 1629
Specific weight	1.13 g/cm ³	DIN EN ISO 1183-1
Hardness	60 Shore A	DIN ISO 7619-1
Colour	Black	

Ref. No.	Designation	Dimensions	Weight
539 1500	REMASTEEL 60	10 x 1 250 x 2 500 mm	98 kg
539 1510	REMASTEEL 60	15 x 1 250 x 2 500 mm	115 kg
539 1520	REMASTEEL 60	20 x 1 250 x 2 500 mm	133 kg
539 1530	REMASTEEL 60	25 x 1 250 x 2 500 mm	150 kg
539 1540	REMASTEEL 60	30 x 1 250 x 2 500 mm	168 kg
539 1550	REMASTEEL 60	40 x 1 250 x 2 500 mm	203 kg
539 2000	REMASTEEL 60	10 x 300 x 300 mm	2.8 kg
539 2010	REMASTEEL 60	15 x 300 x 300 mm	3.3 kg
539 2020	REMASTEEL 60	20 x 300 x 300 mm	3.8 kg
539 2030	REMASTEEL 60	25 x 300 x 300 mm	4.3 kg
539 2040	REMASTEEL 60	30 x 300 x 300 mm	4.8 kg
539 2050	REMASTEEL 60	40 x 300 x 300 mm	5.8 kg

HEAVY WEAR PROTECTION Special rubber elements

REMASTEEL 70 – Rubber plates with metal backing

REMASTEEL plates with rubber quality REMALINE 70 with excellent resistance against wear in dry conditions and impact energy. A 3 mm S235 (St-37) metal backing hot vulcanized on the undersurface enables a easy fitting on the application areas by means and prevents dust and material spillage.



REMASTEEL 70

Properties

- Safe protection against abrasion in addition to impact energies with large-size bulk material
- Easy, flexible and fast application with secure fastening
- Reduction of operating costs
- Long service-life increases the efficiency of your equipment
- Easy replacement possible
- Noise and vibration reducing
- Good resistance against weather

Area of application

- Highest resistance for applications with impact energies and abrasion
- For heavy to medium duty applications in mining, gravel, sand and stone breaking mills and other industrial sectors
- In applications like SKW bodies, bunkers, chutes, loading points, slides, hoppers, silos, etc.

REMASTEEL 70

Specifications

Polymer basis	NR/BR	DIN ISO 1629
Specific weight	1.09 g/cm ³	DIN EN ISO 1183-1
Hardness	63 Shore A	DIN ISO 7619-1
Colour	Black	

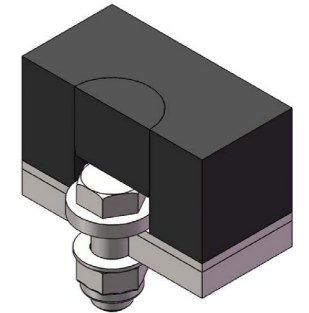
Ref. No.	Designation	Dimensions	Weight
539 1560	REMASTEEL 70	10 x 1 250 x 2 500 mm	98 kg
539 1570	REMASTEEL 70	15 x 1 250 x 2 500 mm	115 kg
539 1580	REMASTEEL 70	20 x 1 250 x 2 500 mm	133 kg
539 1590	REMASTEEL 70	25 x 1 250 x 2 500 mm	150 kg
539 1600	REMASTEEL 70	30 x 1 250 x 2 500 mm	168 kg
539 1610	REMASTEEL 70	40 x 1 250 x 2 500 mm	203 kg
539 2060	REMASTEEL 70	10 x 300 x 300 mm	2.8 kg
539 2070	REMASTEEL 70	15 x 300 x 300 mm	3.3 kg
539 2080	REMASTEEL 70	20 x 300 x 300 mm	3.8 kg
539 2090	REMASTEEL 70	25 x 300 x 300 mm	4.3 kg
539 2100	REMASTEEL 70	30 x 300 x 300 mm	4.8 kg
539 2110	REMASTEEL 70	40 x 300 x 300 mm	5.8 kg

HEAVY WEAR PROTECTION Special rubber elements

Accessories – HDL- and HDL-MP-plates

HDL and HDL-MP Fastening Unit A

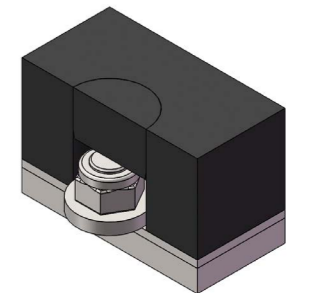
Ref. No.	Designation
539 2696	Hex. bolt, M20 x 80 mm / DIN931 ISO4014
539 2816	Hex. nut, DIN 985, self-locking, M20
539 4412	Rubber cord, Ø 55 x 1 000 mm
539 2768	U-washer, DIN 125-St., inside Ø 21 mm
539 2775	U-washer, DIN 7349, outer Ø 44 mm



HDL Fastening Unit A

HDL and HDL-MP Fastening Unit B

Ref. No.	Designation
539 2720	Stud bolt, M 20x35 mm
539 2775	U-washer, DIN 7349, outer Ø 44 mm
539 2816	Hex. nut, DIN 985, self-locking, M20
539 4412	Rubber cord, Ø 55 x 1 000 mm



HDL Fastening Unit B

HDL and HDL-MP drill

For additional boreholes in rubber such as REMASTEEL.

Ref. No.	Designation
539 4405	HDL drill 50 mm, Shaft for drill chuck (rigid shaft Ø 10 mm)



539 4405

QUESTIONNAIRE
REMAMILL lining

Customer:		Contact person:	
Phone:		Fax:	
Address:		Country (representation):	
		E-Mail:	
Mill Data			
Manufacturer:		Mill Serial No.:	
Installed Engine Power: KW		Delivery year:	
Conditions of operation			
Grinding Stage	<input type="checkbox"/> Primary	<input type="checkbox"/> Secondary	<input type="checkbox"/> Regrind
Type of Mill*	<input type="checkbox"/> Autogeneous (AG) <input type="checkbox"/> Ball <input type="checkbox"/> Multi compartment	<input type="checkbox"/> Semiautogeneous (SAG) <input type="checkbox"/> Pebble <input type="checkbox"/> Batch (additional questionnaire)	<input type="checkbox"/> Rod <input type="checkbox"/> Washing drum
Process*	<input type="checkbox"/> Overflow <input type="checkbox"/> Center peripheral	<input type="checkbox"/> Grate <input type="checkbox"/> Other	<input type="checkbox"/> End peripheral
Process*	<input type="checkbox"/> Wet	<input type="checkbox"/> Dry, max. temperature	°C
Inside diameter*	mm	Length (inside)	mm
Inner diameter of the feed trunnion*	mm		
Inner diameter of the discharge trunnion*	mm		
Heads*	<input type="checkbox"/> Straight	<input type="checkbox"/> Inclined	<input type="checkbox"/> Cupped
Speed*	<input type="checkbox"/> Fixed <input type="checkbox"/> Variable, between	rpm or equal to	% Ncr and rpm
Rotating direction:	seen from feed end: <input type="checkbox"/> Clockwise	<input type="checkbox"/> Anticlockwise	<input type="checkbox"/> Dual
Number of manholes*:			
Numbers of rows*:	Feed end head	Shell	Discharge end head
Grinding media	Type*:	Max. size: mm	Charge volume media: %
Operational data			
Type of ground material*:		Max. size of feed*: mm	
Capacity*:		Product size*: µm	
Type of water used*	<input type="checkbox"/> Well water	<input type="checkbox"/> Recycled water	<input type="checkbox"/> Other
Oil or chemicals in process water*:		<input type="checkbox"/> Yes	<input type="checkbox"/> No
pH value of process water*:		Conductivity µS cm ⁻¹	
Operating: hours / year		Bond work index: kWh/t	
Existing lining product			
Manufacturer:	<input type="checkbox"/> Steel	<input type="checkbox"/> Rubber	<input type="checkbox"/> Other
Thickness of lining: (rubber lining)	Feed end head plate: mm	Lifter: mm	
	Shell plate: mm	Lifter: mm	
	Discharge end head plate: mm	Lifter: mm	

*minimum data required for a preliminary quotation

Place and date Name Signature

QUESTIONNAIRE
Wear protection lining

Customer:		Contact person:	
Phone:		Fax:	
Address:		Country (representation):	
		E-Mail:	
1) Equipment			
Equipment or installation to be lined:			
<input type="checkbox"/> Partial lining	<input type="checkbox"/> Equipment already in operation		
<input type="checkbox"/> Complete lining	<input type="checkbox"/> No. of drawing / drawing enclosed		
<input type="checkbox"/> New lining	<input type="checkbox"/> Still in planning stage		
<input type="checkbox"/> Previously lined	<input type="checkbox"/> Indicate angle in drawing		
Manufacturer:	Remarks:		
Material:			
Thickness of material:			
Fixing system:			
Total material flow:			
2) Purpose of the lining			
<input type="checkbox"/> Protection from wear	<input type="checkbox"/> Noise reduction		
<input type="checkbox"/> Protection from corrosion	<input type="checkbox"/> Other:		
<input type="checkbox"/> Protection from caking			
3) Information about transported materials			
Type of material:	Lump size		
Composition of material:	From:	To:	
	Breakdown of lump size in percentage:		
Spec. weight:			
Humidity:			
Oil content:			
Chemicals (especially acids):			
Constant temperature:	Maximum temperature:		
	Period:		

LEGAL NOTICE

Copyright © 2020 REMA TIP TOP AG

All information is given to the best of our knowledge. All specifications are to be considered non-binding information. Any claim for damages of any kind is excluded. We reserve the right to change technical specifications without prior notice, provided that they ensure product improvement. The information presented is based on technical experience but does not guarantee a product's suitability for specific applications, and does not relieve the users of the responsibility to undertake their own testing, including where any third-party trademark rights are concerned. For special applications and operating conditions with regard to temperature, UV light, ozone, acids and alkaline solutions, dynamic and static forces, tensions, elongations and other influences, contact your local REMA TIP TOP distributor for technical advice.

Operating and working instructions, product information and general instructions on the vulcanization properties of natural and synthetic rubber should be followed carefully. The mechanical and physical values presented for our products only apply to the material listed (without bonding layer and without fabric) based on the accompanying inspections for approval; these represent statistical product data, but not guaranteed product properties. Detailed technical data sheets for each single product are available upon request. The weight indications (kg/m², kg/m, etc.) solely represent statistical values and are not necessarily identical to the actual weights. The weights indicated are merely guidelines for the handling, transport and application of our products. The dimension tolerances are based on part 5 of DIN 7715, classification P3 (admissible dimension tolerances for sheets) and DIN ISO 3302-1, classification M4 (molded parts made of soft-rubber). Other tolerances of specific products for special applications are subject to a mutual agreement and must be stipulated in a special contract. Products containing hazardous substances are labeled in accordance with the regulations (EG) No. 1907/2006 for the

classification, packaging and labeling of hazardous materials and preparations.

In order to preserve product properties, the storage conditions indicated in DIN 7716 should be followed (including storing the product in the original package and in an area that is dry, cool and dark).

Products printed in bold are normally available from stock.

Talk to our team today

 sales@rema-tiptop.com.au

 rema-tiptop.com.au

 **Beresfield (Head Office)**

02 4935 0200
79 Elwell Close,
Beresfield, NSW 2322

Brisbane

07 3710 8833
52 Wentworth Place,
Northgate, QLD 4014

Mackay

07 4953 9100
29-33 Maggiolo Drive,
Paget, QLD 4740

Perth

08 6253 1900
102 Kurnall Road,
Welshpool, WA 6106

Dandenong

03 8786 3333
2 Venture Court,
Dandenong South, VIC 3175

Adelaide

08 8169 2850
11 Lafitte Road,
Wingfield, SA 5013

Newman

08 6253 1900
21 Pardoo Street,
Newman, WA 6753

Gladstone

07 3710 8820
3 McCabe Street,
Gladstone, QLD 4680



// ONE BRAND // ONE SOURCE // ONE SYSTEM