



// ONE BRAND // ONE SOURCE // ONE SYSTEM



## CAPABILITY STATEMENT

From the pit to the port, our range of wear protection, conveying solutions and technologies, surface protection products and 24-hour service model increases your throughput potential, by reducing downtime and improving plant availability.

# CONTENTS

**4** OUR VALUES

**6** ABOUT US

About Us  
Our Customers

**8** CORPORATE SOCIAL RESPONSIBILITY

Community  
Sustainability

**11** HEALTH, SAFETY, ENVIRONMENT & QUALITY

Quality  
Health, Safety & Environment

**13** MATERIAL HANDLING

Conveyor Belting  
Conveyor Components

**17** SURFACE PROTECTION

Linings & Coatings  
Research & Development  
Wear Protection

**20** L>KOB<>': I : ; EEBMR

**23** OUR CUSTOMERS

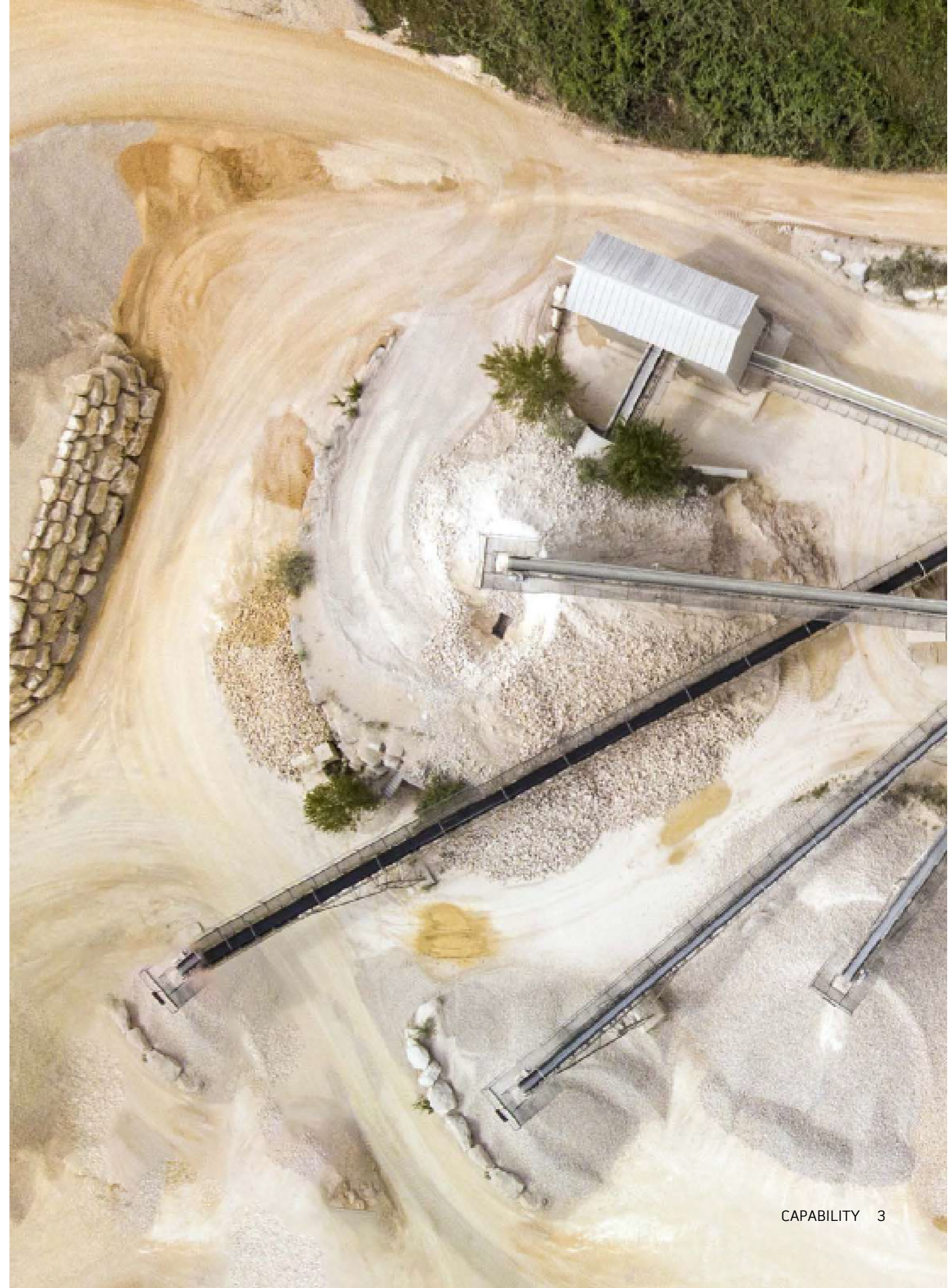
Overview by Commodity  
WA, SA  
QLD, NSW

**28** PROJECTS

ANALYSIS & INNOVATION

**30** TRAINING & DEVELOPMENT

**32** CONTACT US



# We work together to realise a meaningful difference

## OUR VALUES

We work collaboratively with our customers to build relationships that are value aligned, all while working in some of the most challenging environments on the planet.

We're constantly pushing the boundaries to innovate, advocate and to ensure that our people can safely deliver sustainable businesses operations today and into the future.

With our values of People & Belonging, Integrity & Relationships, Courage & Bravery, Innovation & Improvement and Sustainability & Future Focus at its core, simply put our why is...

"We work together to realise a meaningful difference".



### PEOPLE & BELONGING

We're passionate about managing health, safety, environment and quality to ensure that every employee goes home safe and healthy every day. We attract and retain the right people and develop programmes to keep them happy and productive.



### INTEGRITY & RELATIONSHIPS

From our suppliers to our staff and customers we act with integrity to achieve the best possible outcomes.

Our culture values teamwork & accountability to deliver world class performance. We want to build long term relationships that benefit all stakeholders.



### COURAGE & BRAVERY

We strive for a confident and empowered workforce which has clarity in its actions. Our leadership is clear in its vision and our people are confident to challenge if they can see a smarter way forward. Reward comes from measured risk.



### INNOVATION & IMPROVEMENT

A strong continuous improvement focus is embedded in the way we work. We optimise product and services delivery by challenging constraints & processes.

Our aim is to add value and differentiate by being better at what we do than anyone else.



### SUSTAINABILITY & FUTURE FOCUS

A strong continuous improvement focus is embedded in the way we work. We optimise product and services delivery by challenging constraints & processes.

Our aim is to add value and differentiate by being better at what we do than anyone else.

# ABOUT US

REMA TIP TOP is a pioneer of the rubber manufacturing industry with innovation and technological developments stretching throughout its almost 100-year history. REMA TIP TOP products are used across the globe to extend the service life and reduce the maintenance costs of its customers assets.

In the Automotive industry, we lead the global market in repair materials, maintenance services, and products for everything tyres and wheels.

We provide products and services for Australia's major mining houses, OEMs, EPCMs, and other organisations and suppliers across most industries. From specialist rubber lining, wear and corrosion protection, to total conveyor maintenance, management and product supply we are a global market leader in products and services for Materials Processing and Surface Protection.

In Australia, REMA TIP TOP has more than 700 employees, including a services network of more than 400 personnel operating out of strategically located hubs all around the country. As well as our on-site service capability we have rubber lining workshops in Perth and Brisbane with top-of-range equipment and people dedicated to this specialist trade.

## OUR CUSTOMERS

We've worked with a range of industry leaders around the world to deliver innovative, best-in-class bulk materials handling solutions.

Our experience is unmatched, as is our commitment to safely delivering projects that are efficient and value aligned with our clients.



**€ 1,201B**  
FY 2020 Sales



**8,400**  
Employees 2020



**150+**  
Countries



**45,000+**  
Customers



**1923**  
Founded in



**30 +**  
Acquisitions  
190 Shareholdings



**4,350**  
Global Service  
Network



**Subsidiary**  
Of STAHLGRUBER  
Otto Gruber AG



**Proven**  
Entrepreneurial  
culture





# CORPORATE SOCIAL RESPONSIBILITY

## COMMUNITY

At REMA TIP TOP Australia, we are committed to supporting a range of programs and initiatives in our community and we've built a culture of giving back to the community in all our areas of operations. We have a focus on contributing to local organisations because that's where we believe we can make the biggest difference. Through community giving initiatives we regularly support social impact groups including:

- Royal Flying Doctor Service
- RACCQ Rescue
- Movember
- R U OK?
- Foodbank
- National Breast Cancer Foundation
- NAIDOC Awards
- Operation Sunshine WA
- Cancer Council
- Leukemia Foundation
- Local children's sporting teams, such as the "Rema Bulls" Under 15 Basketball Team in Perth.

Our first Reconciliation Action Plan was endorsed by Reconciliation Australia in 2022 and we currently have partnerships with five Supply Nation certified, Aboriginal owned business. Through these relationships we strive to provide opportunities for First Nations businesses throughout our operations.

We're also investing in Australia's future by training the next generation of conveyor belt technicians through our own nationally accredited Registered Training Organisation, RTT Academy. In our training facilities in Perth and Port Hedland, we're equipping the next generation of tradespeople with the skills, experience, and qualifications they need to make successful careers in our industry. Conveyors maintenance has generally been a male dominated industry, and providing pathways for women in mining is something our team is passionate about. RTT Academy is one way we're providing career opportunities to First Nations trainees, and female trainees.

## SUSTAINABILITY

We work collaboratively with our customers to build relationships that are value aligned, all while working in some of the most challenging environments on the planet. We're constantly pushing the boundaries to innovate, advocate and to ensure that our people can safely deliver sustainable businesses operations today and into the future.

Sustainability is central to everything we do. By combining the work of our innovation specialists continuously developing new materials and solutions in our laboratories, and our operation and services crews keeping your equipment in its best state, we maximise economic efficiencies and environmental protection.

Through our rubber recycling program and initiatives to reduce scope one and scope two carbon emissions, we're reshaping how we do business to ensure our negative environmental impact is continually minimised.

Equally central to this is our approach to business sustainability. We utilise our global supply chain and strong network of manufacturers to be an ethical and sustainable supplier of innovative product and service solutions in the Australia materials processing industry. We believe that an integrated and transparent approach to governance, ethics, risk and compliance, strengthens our values and promotes our objectives as a responsible, sustainable business.



# HEALTH, SAFETY, ENVIRONMENT & QUALITY



## QUALITY

REMA TIP TOP is committed to providing our customers a readily available supply of products and services to meet their requirements.

Our customers are central to our operation and their satisfaction is our goal.

We have a quality management system that we seek to continually improve according to the principles of ISO 9001, focusing on the key areas of:

- Customer satisfaction
- Leadership
- Engagement of our people
- Process approach
- Improvement
- Evidence based decision making
- Relationship management

## HEALTH, SAFETY & ENVIRONMENT

We understand that to meet our customers' needs, we need to have the best people enthusiastically driving outcomes for you. Through our MATE SAFE culture, safety framework, training capabilities and HR initiatives we promote our values and drive a positive team culture.

Being MATE SAFE means being accountable for your safety and the safety of those you interact with. Our MATE SAFE culture is built on the foundation of a safety management system that includes:

- Risk management
- Hazard identification
- Isolation
- Manual handling
- Contractor management
- Purchasing
- Injury management
- Return to work procedures
- Working at heights
- Confined spaces
- Handling of hazardous substances





# MATERIAL HANDLING

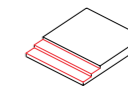
REMA TIP TOP has more than 30 years' experience in Australia and more than 80 years' experience globally in the material handling industry.

Conveyor systems are a critical part of any plant. We treat your conveyors like an integrated system supplying premium products, advanced monitoring and analytics tools and experienced conveyor engineering experts to keep you moving.

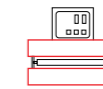
## CONVEYOR BELTING

REMA TIP TOP has conveyor belt production facilities in Europe, South Africa and China, including Dunlop Belting Products South Africa. Our product range includes fabric ply, steel cord and solid woven belts, manufactured to suit a large range of applications and to Australian specifications including FRAS.

Rema Tip Top is also one of the largest stockists of conveyor belt in Australia with conveyor belt stock from 450mm width to 1800mm width located in Perth, Kalgoorlie, Geraldton, Port Hedland, Adelaide, Newcastle, Brisbane, Gladstone, Mackay and Townsville.



Fabric, steel cord & solid woven belts



Vulcanisation presses



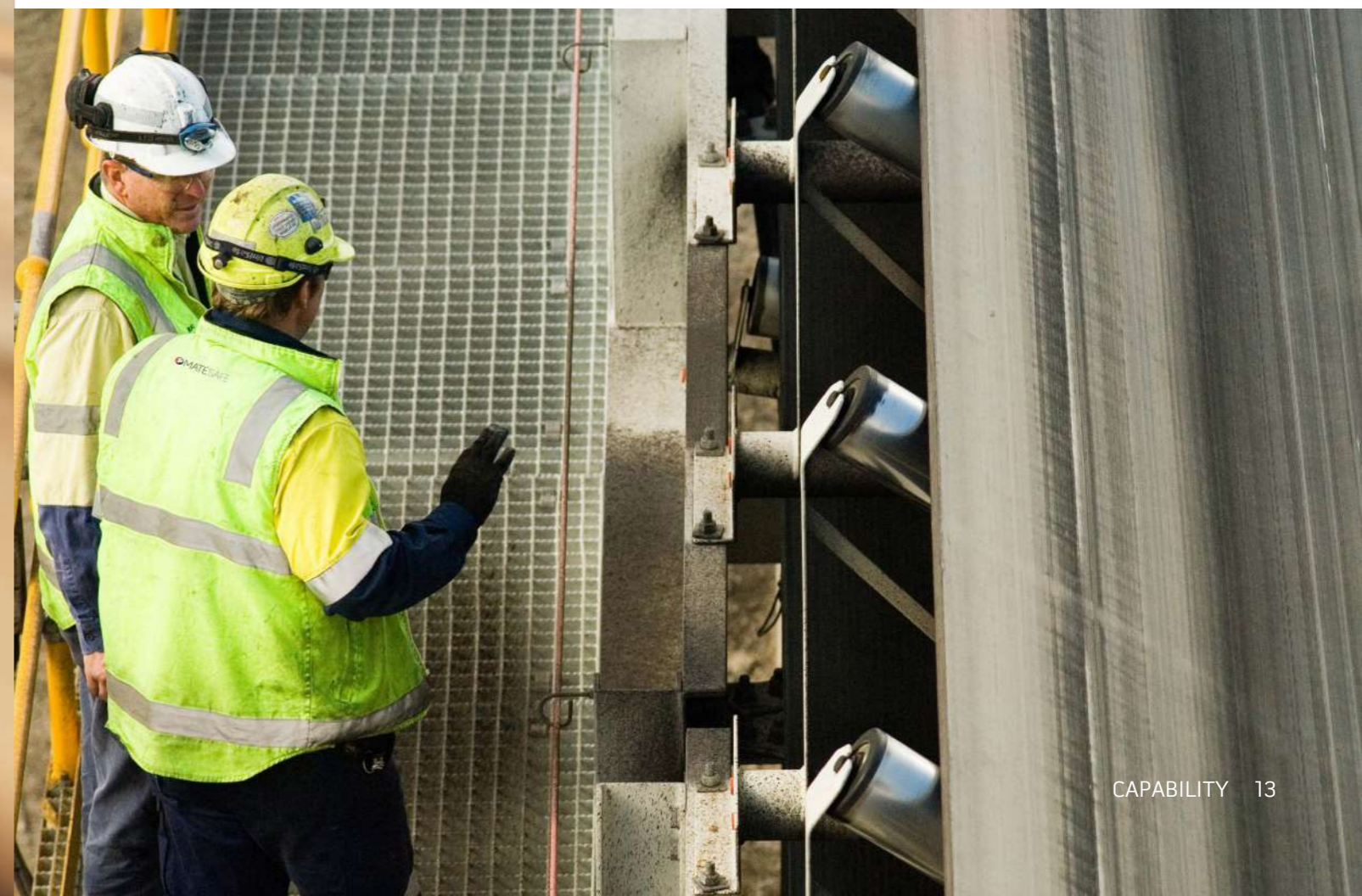
Tools & repair systems - a full range of splice materials and splice kits to suit



Safety equipment



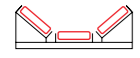
Engineering & technology



## CONVEYOR COMPONENTS

High-quality, well maintained and monitored conveyor components have the potential to dramatically improve the efficiency, availability and production capacity of a conveyor system. REMA TIP TOP works in partnership with market-leading supplier to offer everything from belt cleaning systems to high-tech, innovative rollers, idlers and frames, belt tracking units, and pulley fabrication.

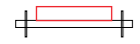
These high-quality products have a huge range suitable for all applications and our massive stock holdings situated in strategic warehouse locations around the country means we can provide you with a solution with minimal lead time.



Idlers, rollers & frames



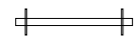
Trackers



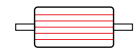
Belt cleaning systems



Engineering



Belt cleaners



Pulleys



Safety equipment







# SURFACE PROTECTION

In the industrial world, corrosion causes millions of dollars of damage every year. REMA TIP TOP corrosion protection systems prevent such damage and maintain the value of your plant while contributing to environmental protection.

We are the global leader in surface protection systems with rubber, brick and ceramic lining options that paired with our chemical engineering expertise protects your mineral processing plant from acidic, corrosive and high temperature solutions.

REMA TIP TOP also boasts an in-house chemical engineering innovation team. Our investment in these R&D activities is why REMA TIP TOP products are market leaders. We are constantly testing, developing and improving our corrosion prevention linings and coating materials, new composites of rubber, synthetics, ceramics and metals, and a range of adhesive and rubber solutions.



Corrosion rubber linings



Coatings & brick linings



Combination linings



Engineering



Anti-caking



Adhesives

## WEAR PROTECTION

In many industries, raw and aggregated material can be highly abrasive causing damage and wear to unprotected machinery. REMA TIP TOP has a range of different wear protection solutions depending on the area of the plant affected and the abrasive nature of the material being handled.

Wear protection solutions include ceramic-rubber compounds like our industry-leading REMALOX range, heavy-duty wear liners, steel-backed plates, rubber linings, screening mats and mill liners.



Pulley lagging



Wear rubber linings



skirting systems



Ceramics



Adhesives



Heavy wear linings



Steel plates



Mill lining



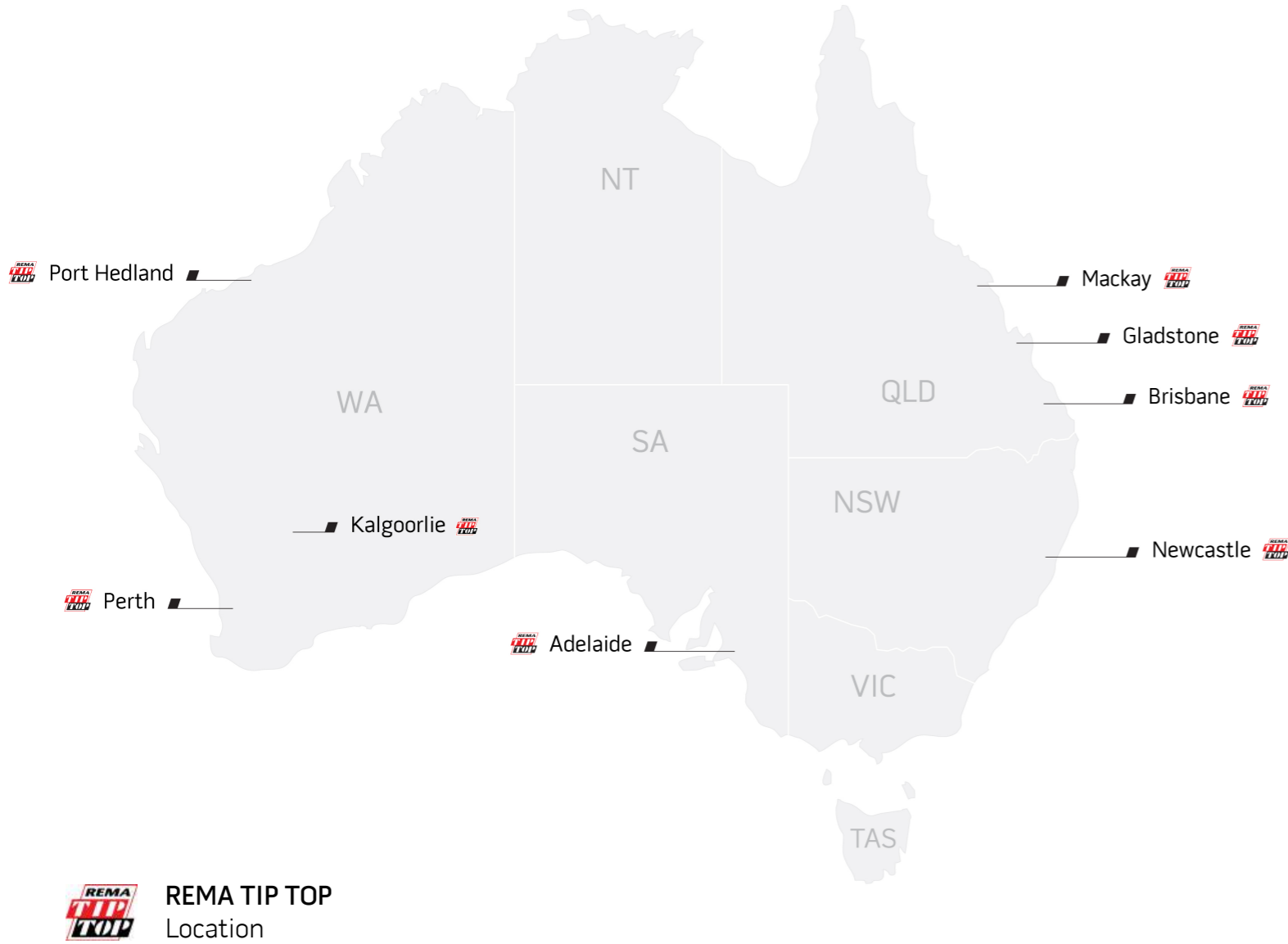
Screening mats



Anti-caking



# SERVICE CAPABILITY



10  
Industry Hubs



3  
Rubber Lining  
Workshops



700+  
Employees

## INDUSTRY HUBS

### WA

Perth  
Port Hedland  
Kalgoorlie

### QLD

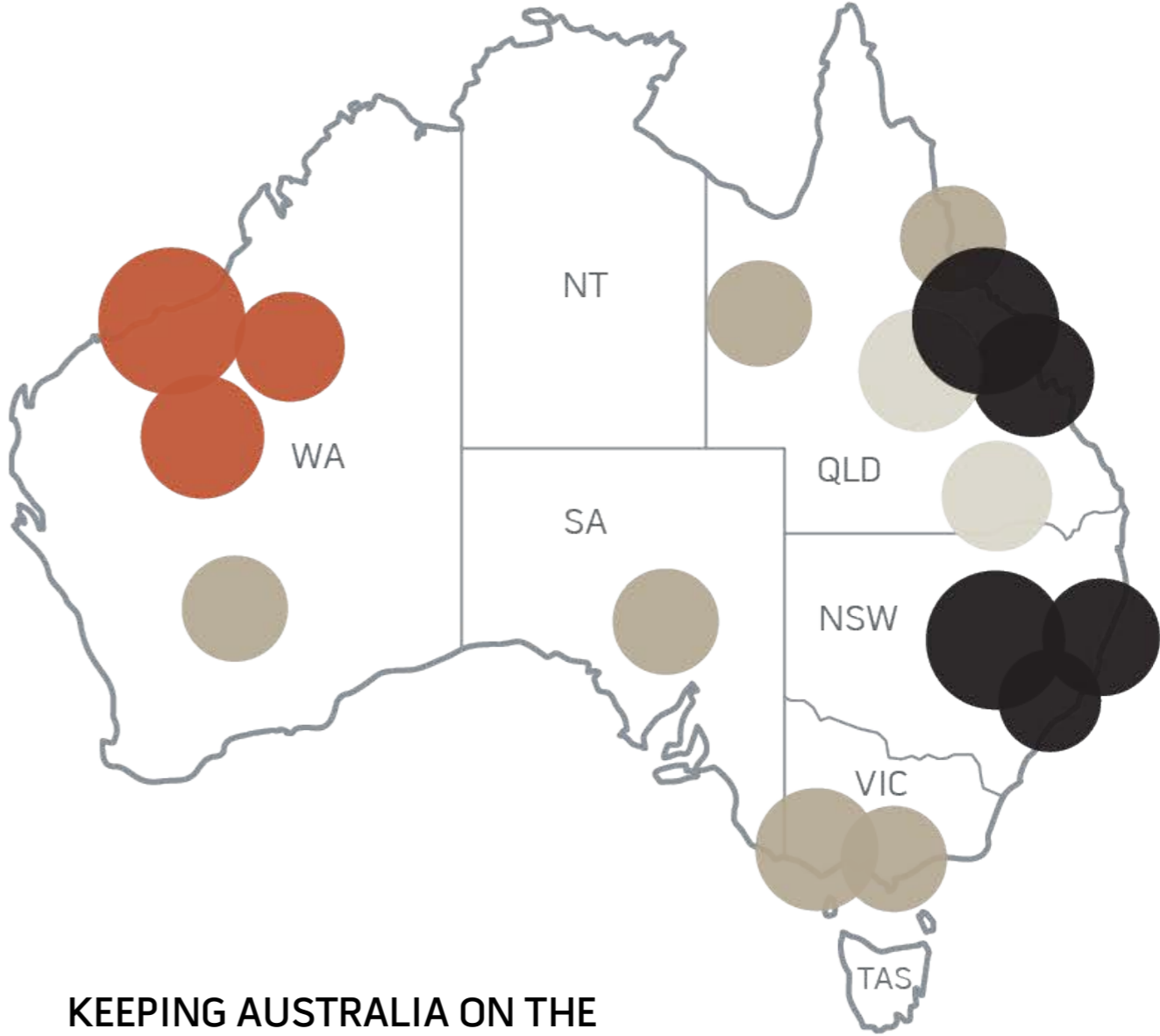
Mackay  
Gladstone

### SA

Adelaide



# OUR CUSTOMERS



## KEEPING AUSTRALIA ON THE MOVE

Right across Australia we work with our customers to extend the service life of their plants and reduce maintenance costs

From mining in coal, iron ore and minerals to energy generation, we offer products and services across the entire value chain to maximise productivity, efficiency and profitability.

-  IRON ORE
-  COAL
-  MINERALS
-  ENERGY GENERATION



## CUSTOMERS WA

17+

### IRON ORE SITES

Providing conveyor maintenance, inspection services and rubber products at more than seventeen iron ore and gold sites across WA.

400+

### BELTS INSTALLED PER YEAR

More than four hundred conveyor belts installed across sites in WA per year.

480

### PEOPLE

Four hundred and eighty people providing expert service and knowledge, twenty-four hours a day

3

### Rubber Lining Workshop.

Perth, Port Hedland and Kalgoorlie



## CUSTOMERS SA

2

### COPPER, URANIUM & GOLD SITES

Providing conveyor maintenance services and conveyor belt supply to sites across SA.

25+

### BELTS INSTALLED PER YEAR

More than twenty-five conveyor belts installed across sites in SA.

20+

### PEOPLE

More than twenty people providing expert service and knowledge, twenty-four hours a day.

1

### Rubber Lining Workshop



## CUSTOMERS QLD

11

### COAL, POWER GENERATION & BAUXITE SITES

Providing conveyor maintenance services and the supply of products to eleven coal, power generation and bauxite sites across QLD.

50+

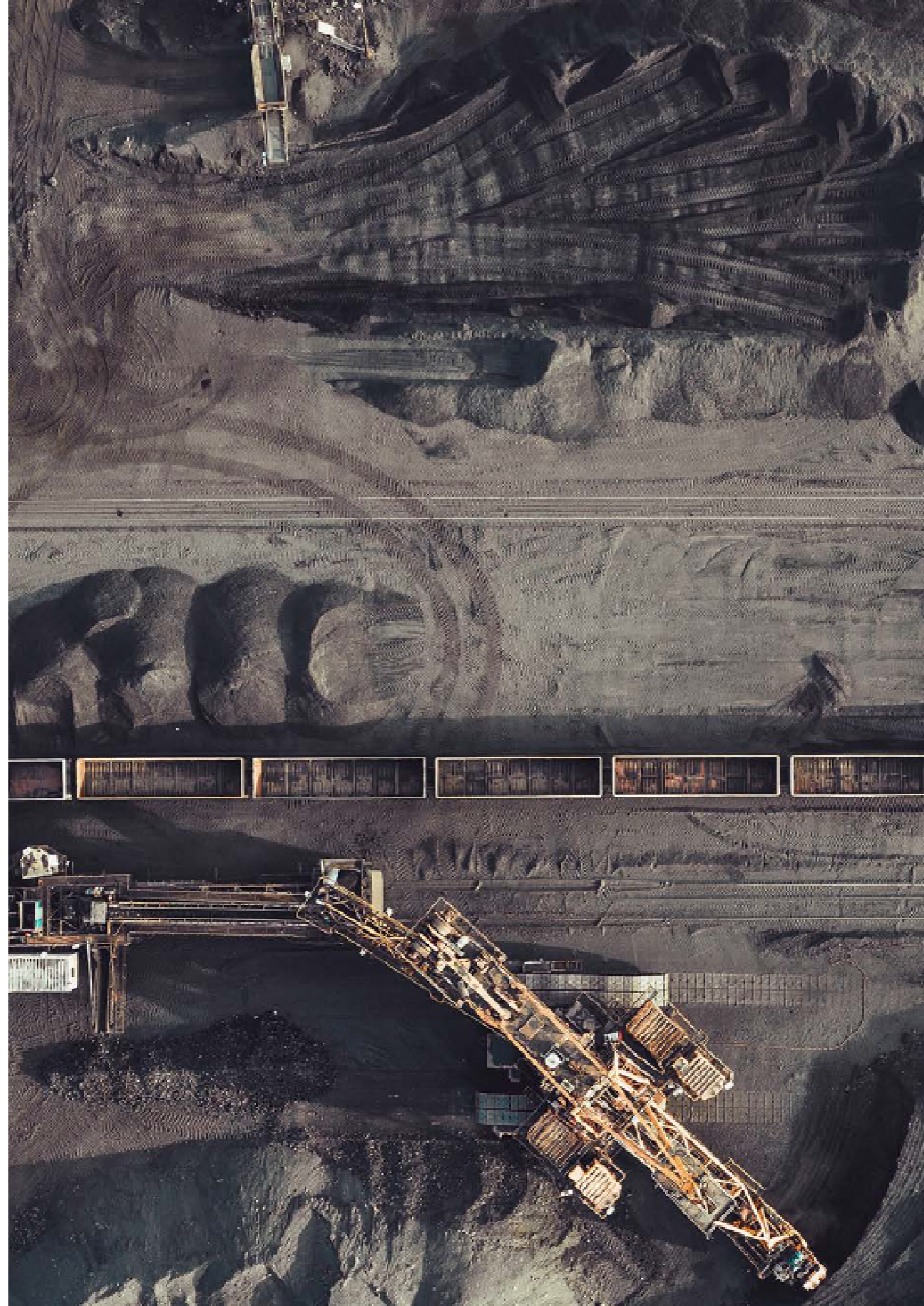
### BELTS INSTALLED PER YEAR

More than fifty conveyor belts installed across sites in QLD.

58

### PEOPLE

Fifty-eight people providing expert service and knowledge, twenty-four hours a day.



## CUSTOMERS NSW

10

### COAL & POWER GENERATION SITES

Providing conveyor maintenance services and the supply of products to ten coal, coal loading and power generation sites across NSW.

70+

### BELTS INSTALLED PER YEAR

More than seventy conveyor belts installed across sites in NSW per year.

50

### PEOPLE

Fifty people providing expert service and knowledge, twenty-four hours a day.

# PROJECTS

REMA TIP TOP has a long history of successful greenfield and brownfield project delivery in Australia. Our unique capabilities enable us to deliver smarter, faster and safer belt installation, replacements and splicing services for conveyor projects, and our rubber lining products and service expertise positions us to protect the high wear, vulnerable areas of your plant.

We have a dedicated, qualified and experienced project management team that will see a project through from feasibility studies, design, engineering, tendering, commissioning and delivery.



Project management



24/7 service



Engineering

123

Methodology development



High capacity equipment



## JUST A FEW OF OUR PROJECTS

CUSTOMER	INDUSTRY	SITE	STATUS	SCOPE OF WORKS
Downer EDI Engineering	Coal	Moolarben, NSW	Complete	Installation and splicing of 5700m EP2500/5 1800mm wide belt.
Wesfarmers	Coal	Curragh, QLD	Complete	Overland conveyor replacement, lap out and installation of 50km of ST1500 1200mm wide belt, equipment and civil works design, mobilisation and project management.
Kaltim Prima Coal	Coal	East Kalimantan, Indonesia	Complete	Overland conveyor replacment, lap out and installation of 27 x ST2250 1100mm wide belt, equipment and civil works design, international mobilisation and project management of local workforce.
Hunter Valley Operations	Coal	Lemington, NSW	Awarded	Complete overhaul of RC2 Conveyor to commence 2020.
Rio Tinto	Iron Ore	Cape Lambert, WA	Complete	Lap out, splice and installation of 6400m ST2500 belt. Installation and splicing of 292m ST1400 1600mm wide belt.
FMG	Iron Ore	Christmas Creek, WA	Complete	Lap out, splice and installation of 1500m ST2500 1800mm wide belt.

CUSTOMER	INDUSTRY	SITE	STATUS	SCOPE OF WORKS
Goodline	Iron Ore	Port Hedland, WA	Completed	Removal, installation and splicing of 3000m ST2500 1800mm wide belt
Monadelphous	Iron Ore	BHP South Flank, WA	Completed	85km of Conveyor belt installation and 160 splices
Monadelphous	Iron Ore	Rio Tinto West Angelas Deposits C&D, WA	Awarded	Conveyor belt installation and splicing
Goro Nickel	Nickel	Prony Bay, New Caledonia	Completed	Rubber Lining and concrete remediation
Minara	Nickel	Murrin Murrin, WA	Ongoing	Rubber Lining and concrete remediation
Lynas / Polaris	Rare earth	Perth, WA	Ongoing	Corrosion protection rubber lining
BHP	Poly-metalic	Perth, WA	Ongoing	Material supply and service

# ANALYSIS & INNOVATION

The REMA TIP TOP Analysis & Innovation department brings together technology & analytics, engineering and maintenance & equipment solutions.

It uses over 80 years of conveyor maintenance experience paired with a knowledgeable team and high capacity equipment to innovate and optimise your systems.

## TECHNOLOGY



Maintenance strategy development



Analytics & reliability engineering



Digitalisation technologies



Business cases & evaluation

## EQUIPMENT



Equipment design & upgrades

## ENGINEERING



Audits & design checks



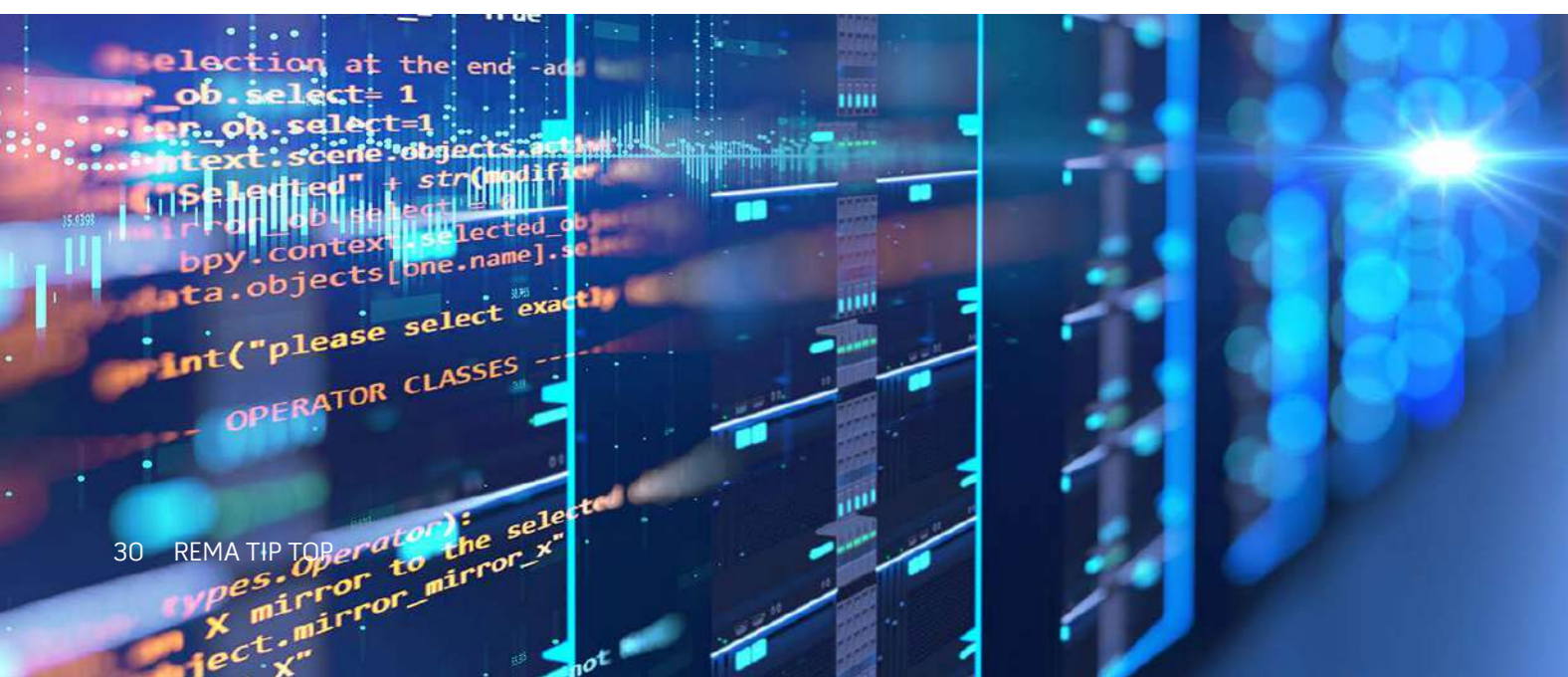
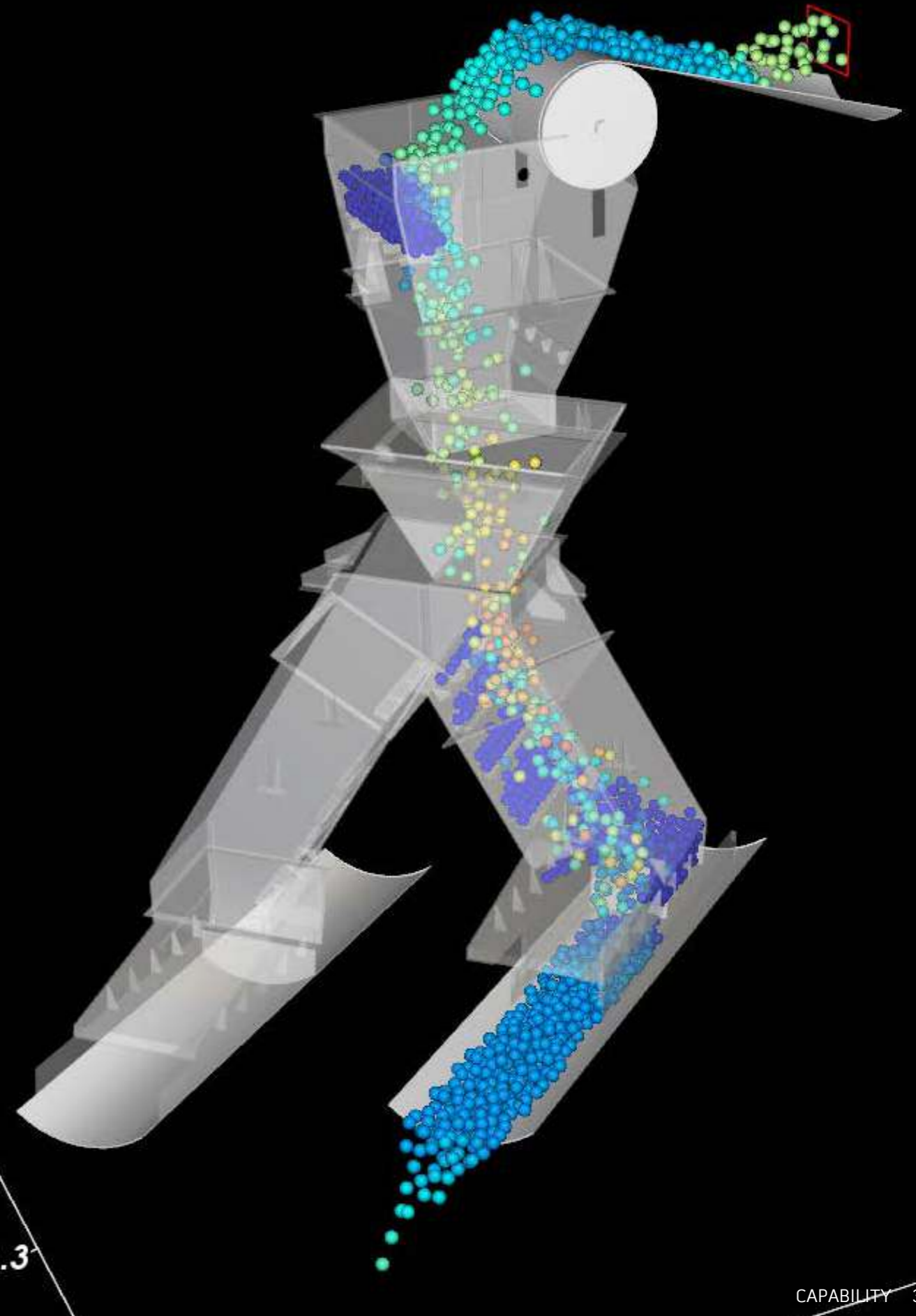
Engineering design & upgrades



Optimisation studies



Project management





# TRAINING & DEVELOPMENT

Our professional/personal growth and career development opportunities are made available to all our people and we encourage everybody to take advantage.

At the centre of our growth and development opportunities are your career goals, individual strengths, motivations and personal interests. We work with you to ensure that you can achieve your best for both your personal and professional development and the success of our business.

Regular discussions are held throughout the year between our employees and managers with the aim of fostering continuous feedback and communication for future performance and development.

Our registered Training Organisation, REMA TIP TOP Academy, provides our employees with in-house industry standard training across a range of leadership, management and industry specific courses.



# CONTACT US

## INDUSTRY

### NSW

79 Elwell Close,  
Beresfield, NSW, 2322,  
Tel: +61 2 4935 0200

### QLD

52 Wentworth Place,  
Northgate, QLD 4013  
Tel: +61 7 3710 8833

29-33 Maggiolo Drive  
Paget, QLD 4740  
Tel: +61 7 4953 9100

16 Helen Street,  
Gladstone, QLD 4680 Tel:  
+61 7 3710 8820

### SA

11 Lafitte Road Wingfield,  
SA 5013 Tel: +61 8  
8169 2850

### WA

102 Kurnall Road  
Welshpool, WA 6106  
Tel: +61 8 6253 1900

41 Harwell Way  
Wedgfield, Port  
Hedland, WA 6721  
Tel: +61 409 241 412

16 Cunningham Drive  
Kalgoorlie, WA 6430  
Tel: +61 2 4935 0200





// ONE BRAND // ONE SOURCE // ONE SYSTEM