

● AIR TOOLS AND INFLATION



REMA TIP TOP //

Impact Wrenches	162
Impact Wrenches & Other Air Tools	164
Other Air Tools	166
Air Tool Accessories	167
Tyre Inflation	168
Air Tools and Inflation	169
Airline Hoses and Reels	172
Air Tools and Inflation	173
Airline Fittings	174

# AIR TOOLS AND INFLATION

## Impact Wrenches

### 1/2 inch drive



109930



109961



109936



160502



160567

Ref. No.	Description	Air inlet	Drive	Max Torque	Speed	Average air consumption	Weight
109930	Impact wrench CP 7748-2	1/4"	1/2"	1250 Nm	8,200 rpm	150 l/min	2.25 kg
109961	Impact wrench CP 7736-2	1/4"	1/2"	900 Nm	10,000 rpm	210 l/min	2.9 kg
109936	Impact wrench CP 749-2	1/4"	1/2"	827 Nm	6,400 rpm	156 l/min	2.6 kg
160502	Impact wrench IR131-2	1/4"	1/2"	575 Nm	8,000 rpm	119 l/min	2.6 kg
160567	Impact wrench KI-8571-2	1/4"	1/2"	813 Nm	7,000 rpm	124 l/min	2.97 kg

## AIR TOOLS AND INFLATION

### Impact Wrenches

#### 3/4 inch drive



109867



109887



109893



109914



109916



160566 (short anvil)  
160495 (3" anvil - pictured)  
160500 (6" anvil)

Ref. No.	Description	Air inlet	Drive	Max Torque	Speed	Average air consumption	Weight
109867	Impact wrench CP 7763D-6	1/2"	3/4"	1760 Nm	6,600 rpm	193 l/min	7.3 kg
109887	Impact wrench IR2145 Qimax-6	3/8"	3/4"	1350 Nm	8,000 rpm	119 l/min	2.6 kg
109893	Impact wrench CP 7769-6 composite	3/8"	3/4"	1950 Nm	7,000 rpm	219 l/min	4 kg
109914	Impact wrench CP 7763-6	3/8"	3/4"	1627 Nm	6,300 rpm	210 l/min	6.28 kg
109916	Impact wrench IR261-6	3/8"	3/4"	1224 Nm	5,500 rpm	269 l/min	9.5 kg
160493	Impact wrench KI-1635-6	3/8"	3/4"	1600 Nm	5,500 rpm	241 l/min	6.4 kg
160494	Impact wrench KI-23-6	3/8"	3/4"	1085 Nm	6,500 rpm	198 l/min	4.93 kg
160495	Impact wrench KI-22-3	1/4"	3/4"	1085 Nm	6,500 rpm	198 l/min	5.35 kg
160500	Impact wrench KI-22-6	1/4"	3/4"	1085 Nm	6,500 rpm	198 l/min	6.15 kg
160566	Impact wrench KI-22	1/4"	3/4"	1085 Nm	6,500 rpm	198 l/min	4.55 kg

## AIR TOOLS AND INFLATION

### Impact Wrenches & Other Air Tools

#### 1 inch drive



160568



109850



109890

Ref. No.	Description	Air inlet	Drive	Max Torque	Speed	Average air consumption	Weight
160568	Impact wrench KI-1838-6	1/2"	1"	2172 Nm	5,000 rpm	255 l/min	8.1 kg
109850	Impact wrench CP 7783-1	1/2"	1"	2400 Nm	6,200 rpm	270 l/min	8.4 kg
109890	Impact wrench CP 7782-6	1/2"	1"	2900 Nm	5,200 rpm	288 l/min	11.6 kg

#### Air grinders



109899



109972



160496



160701



160702

Ref. No.	Description	Model	Speed
109899	Grinder super duty	KI-6970-SL	14,000 rpm
109972	Grinder	CP 871	22,000 rpm
160496	Angle grinder	KI-6803-XSL 4"	13,600 rpm
160701	Grinder	KI-6206-IN	22,000 rpm
160702	Grinder	KI-4401	25,000 rpm

## AIR TOOLS AND INFLATION

### Other Air Tools

#### Air buffers

- For buffing and grinding work, rear exhaust through hose



Ref. No.	Description	Model	Speed
109905	OTR Air buffer • with lateral exhaust hose	UG-1250-LM	7,200 rpm
109900	Air buffer For use with: • Quick coupling QC3/8 - 24" (5196603)	UG-65-EB	14,600 rpm
160540	Air buffer with hose	KI-4425-HO	3,000 rpm
109973	Air buffer	CP 873	2,500 rpm

Ref. No.	Description
	<b>Accessories:</b>
160531	Exhaust hose (2 m) For use with: • Air grinder CP 871 (109972), KI-4401 (160702), CP 873 (109973)



160531

#### Air drills

Ref. No.	Description	Air inlet	Chuck size	Speed	Average air consumption	Weight
160538	KI-863-KC Reversible	1/4"	3/8"	1,800 rpm	113 l/min	0.98 kg



160538

## AIR TOOLS AND INFLATION

### Other Air Tools

#### Needle scalers

Ref. No.	Description
160950	Needle Scaler NS 4120



160950

#### Patch hammers

Ref. No.	Description	Model	Speed
5174450	Patch hammer, compact	1.0 kg	6 - 8 bar
5173602	Patch hammer, large • with metal ram	1.9 kg	6 - 8 bar



5174450

#### Accessories:

5173626	Metal ram For use with: • Patch hammer (5173602)
---------	--



5173602

#### Vacuum cleaner

- For removal of dust and water from the tyre

Ref. No.	Description
170235	Vacuum cleaner for balance compounds dust/water, pneumatic operation



170235

#### Air sprayers

Ref. No.	Description	Nozzle type	Inlet thread
108250	Blow gun	100 mm std.	1/4" BSP (F)
108454	Blow gun	150 mm std.	1/4" BSP (F)



108250



108454

# AIR TOOLS AND INFLATION

## Air Tool Accessories

### Tool holders

Ref. No.	Description
109964	Air Tool Holder CP9841, magnetic <ul style="list-style-type: none"> <li>• High Capacity magnet</li> <li>• Built in socket holder</li> <li>• Solid construction</li> </ul>



109964

### Air tool maintenance



110080



110082



110084



109970



109969



110068

Ref. No.	Description	Contents
110080	Air Tool Oil <ul style="list-style-type: none"> <li>• Specifically developed for the maintenance of air tools</li> <li>• Always ensures reliable motor lubrication through the air connection, and prevents rust build-up in the drive unit</li> <li>• Increased service life of tools</li> <li>• Prevents the build-up of residue of resins, dirt, rust particles etc.</li> </ul>	1 litre
110082	Air Tool Oil Synthetic	120 ml
110084	Air Tool Oil Synthetic	591 ml
109970	Air Tool Oil Grease	2 lb
109969	Mini grease gun	
110068	Air Tool Conditioner Aerosol <ul style="list-style-type: none"> <li>• For piston-type and rotary air-tools</li> <li>• Breaks the surface of calcium</li> <li>• Restores the tool to its normal power and speed</li> </ul>	360 ml

# AIR TOOLS AND INFLATION

## Tyre Inflation

### Tyre inflating connectors, clip-on



102210



103434



102220



102225



102235



102236



102237



102245



157006



5625095






157007



5628195



102238

Ref. No.	Description			
102210	Clip-on chuck Alligator, closed end	•	•	•
103434	Clip-on chuck, 315 closed end	•	•	•
102220	Clip-on chuck AC18, closed end	•	•	•
102225	Clip-on chuck AC18F, open end	•	•	•
102235	Clip-on chuck CH340, closed end HALTEC	•		
102236	Clip-on chuck CH340, open end HALTEC	•		
102237	Clip-on chuck 4660A EM, closed end			•
102239	Clip on chuck H-5265, closed end HALTEC	•	•	•
102242	Clip-on chuck H-5265-OP, open ended	•	•	•
102245	Clip-on chuck 4660A EM Haltec, closed end			•
157006	Clip-on connector, V-3031, open end, 6 mm hose	•	•	•
5625095	Clip-on connector, V-3031, open end, 8 mm hose	•	•	•
157007	Clip-on connector V-3031-08, closed end, 6 mm hose			
5628195	Valve deflator			
<b>Accessories</b>				
103506	Air chuck 315 repair kit			
102221	Air chuck AC18 spare rubber-seal			
102238	Air chuck 4660A EM repair kit			
102246	Air chuck 4660A-OP Haltec repair kit			

AIR TOOLS AND INFLATION  
Air Tools and Inflation

Tyre inflating connectors, push on

Ref. No.	Description
102227	Dual foot chuck, AC26T • Closed end • Tapered tip
102228	Dual foot chuck, AC26TF • Open end • Tapered tip
102229	Dual foot chuck • Closed end • Tapered tip
108378	Dual foot chuck, O3-0472 • Closed end
109618	Dual foot chuck • Open end • Clip on
157025	Dual foot chuck • Open end



Tyre inflating connectors, lock on

Ref. No.	Description
102226	Dual foot chuck, AC25T HALTEC • Closed end
103548	Single foot chuck, CH-300 HALTEC • Closed end
103550	Dual foot chuck, AC25 • Closed end
103555	Dual foot chuck, AC25 long • Closed end
103551	Dual foot chuck, AC23 HALTEC • Closed end



5

## AIR TOOLS AND INFLATION

### Air Tools and Inflation

#### Tyre inflating connectors, lock on EM

Ref. No.	Description
103438	Single foot chuck, EX666 long <ul style="list-style-type: none"> <li>• Closed foot</li> </ul>
103439	Single foot chuck, 377 long <ul style="list-style-type: none"> <li>• Closed foot</li> </ul>



#### Digital Tyre inflators

Ref. No.	Description
160602	Digital automatic tyre inflator <ul style="list-style-type: none"> <li>• Aluminium die cast housing</li> <li>• Large backlit LCD display</li> <li>• Can be used with hoses up to 50 m long</li> <li>• Accuracy +/- 0.3 psi</li> <li>• 0-145 psi, 0.5-10bar, 0-1000kPa, 0-10kg/cm<sup>2</sup></li> <li>• Includes equivalent Nitto adaptor</li> </ul>
160606	Digital automatic tyre inflator <ul style="list-style-type: none"> <li>• Aluminium die cast housing</li> <li>• Large backlit LCD display</li> <li>• Can be used with hoses up to 50 m long</li> <li>• Accuracy +/- 0.3 psi</li> <li>• 0-145 psi, 0.5-10bar, 0-1000kPa, 0-10kg/cm<sup>2</sup></li> <li>• Includes equivalent Nitto adaptor</li> <li>• 12 Volt for in field use</li> </ul>



#### Digital hand-held tyre inflation gauges

Ref. No.	Description
108316	Digital tyre inflation gauge with 6ft hose (2 metres)
160601	Digital tyre inflation gauge hand held re-chargeable



AIR TOOLS AND INFLATION  
Air Tools and Inflation

Hand-held tyre inflation gauges



108302



108350



108303



108322



108333



5199356

Ref. No.	Description	Dia.
108302	Inflation gauge 4 metre hose complete	0-230 PSI
108303	Inflation gauge	0-160 PSI
108322	Inflation gauge	20-160 PSI
108333	Inflation gauge	0-220 PSI
108350	Inflation gauge TDR-2000	0-138 PSI
5199356	Inflation gauge Wonder 1991	0-170 PSI
<b>Accessories:</b>		
5199358	Replacement hose for 1991 gauge (5199356)	
108334	4 m spare hose, to suit gauge (108302)	

Hand-held inflation device for EM tyres



103508



170350

Ref. No.	Description
103508	Inflation device, large bore, 1-401
170350	Inflation device, dual standard/large bore, 5 m

## AIR TOOLS AND INFLATION

### Air Tools and Inflation & Airline Hoses and Reels

#### Hand-held master pressure gauge

Ref. No.	Description
108300	Master pressure gauge <ul style="list-style-type: none"> <li>• for the testing of any type of gauge</li> <li>• with certification</li> </ul>



108300

#### Pressure regulators

Ref. No.	Description
180350	Air line filter regulator/ lubricator <ul style="list-style-type: none"> <li>• Ensures the correct air supply for valuable air tools</li> </ul>



180350

#### Airline Hoses and Reels

##### Airline hose without fittings

- PUC quality airline 20 meter lengths
- For air/water

Ref. No.	Description	Internal diameter	Colour	Length
109835	Hose Coldflex	6 mm	blue	20 m
109836	Hose Coldflex	8 mm	black	20 m
109837	Hose Coldflex	10 mm	black	20 m
109838	Hose Coldflex	12 mm	black	20 m



109837

##### Airline rubber hose fitted

- Heavy duty reinforced rubber hose
- Outer casing with fine bleed holes
- Rated to 300 psi
- Supplied with 1/4 BSP fitting swagged to the hose

Ref. No.	Description	Internal diameter	Colour	Length
109811	Hose rubber	12.5 mm	red	20 m
109812	Hose rubber	10 mm	red	20 m



109812

##### Coiled hose fitted

- Polyurethane with reinforced fitted ends

Ref. No.	Description	Internal diameter	Colour	Length
109865	Recoil hose	8x12 mm	blue	6 m



109865

# AIR TOOLS AND INFLATION

## Air Tools and Inflation

### Hose reels

- Self retracting quality hose and fittings
- Australian made

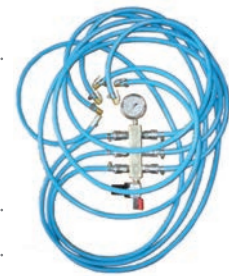
Ref. No.	Description	Internal diameter	Colour	Length
108465	Retracta hose reel	10 mm	blue	15 m
108466	Retracta hose reel	12 mm	blue	15 m
108467	Retracta hose reel	10 mm	blue	20 m



108465

### Air manifolds

Ref. No.	Description
109800	Air Spider Kit Includes: • 6 Airline hoses • Air pressure gauge • Air filter/ regulator
109788	8 Airline hoses
	<b>Accessories</b>
109799	Air filter/ regulator for 109800 (one)



109800



109799

### Hose clamps

- High-quality material
- Screw saddle and band made of stainless steel
- Slotted hexagon screw: galvanized steel

Ref. No.	Description	Clamping range	Band width
108492	Hose clamp	8-12 mm	10 mm
109719	Hose clamp	10-16 mm	10 mm
109720	Hose clamp	12-18 mm	10 mm



108492



109719



109720

### Hose clips

- Clip on hose clamp
- Easy clipping to install
- Un-obtrusive no bulky clamping screw
- Safer alternative to screw clamps

Ref. No.	Description	Clamping range	Band width
109717	OTK Hose clip	11-13 mm	10 mm
109718	OTK Hose clip	15-18 mm	10 mm
109722	OTK Hose clip	13-15 mm	10 mm



109717, 109718,  
109722

# AIR TOOLS AND INFLATION

## Airline Fittings

### RYCO series

Ref. No.	Description	Thread	Hose diameter
108001	Coupler 200	1/4" female	
108002	Coupler 201	1/4" male	
108025	Coupler F900	1/4" female	
108155	Coupler	3/8" female	
108460	Coupler F912		3/8"
108004	Fitting 202S	1/4" male	
108006	Fitting 203S	1/4" female	
108008	Fitting 205		1/4"
108009	Fitting 206		5/16"
108167	Fitting 253	3/8" male	
108011	Barb 207	1/4" male	1/4"
108012	Barb 208	1/4" male	5/16"
108013	Barb 209	1/4" male	3/8"
108014	Barb 210	1/4" male	1/2"
108016	Barb	1/2" male	3/8"
108020	Fitting 217	VG8 female	
108034	Double barb 229		3/8"
108043	Barb 237	1/4" female	5/16"
108044	Barb 238	1/4" female	3/8"
108053	Double barb 258		1/2"
108010	Fitting 206A		3/8"



108001, 108155



108002



108025



108460



108004, 108167



108006



108011



108012



108013, 108016



108014



108020



108034



108043



108044



108053



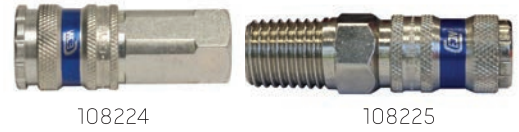
108010, 108008  
108009

# AIR TOOLS AND INFLATION

## Airline Fittings

### CEJN series

Ref. No.	Description	Thread	Hose diameter
108224	Coupler 1202	1/4" female	
108225	Coupler 1155	1/2" male	
108226	Coupler 1204	3/8" female	
108227	Coupler 1154	3/8" male	
108230	Coupler 1205	1/2" female	
108232	Coupler 1004		3/8"
108235	Coupler 1152	1/4" male	
108241	Coupler 1005		1/2"
108220	Fitting 5004		3/8"
108221	Fitting 5202	1/4" female	
108223	Fitting 5152	1/4" male	
108229	Fitting 5154	3/8" male	
108231	Fitting 5205	1/2" female	
108242	Fitting 5005		1/2"
108244	Fitting 5155	1/2" male	
108245	Fitting VG8	VG8 female	
108246	Fitting VG12	VG12 female	



# AIR TOOLS AND INFLATION

## Airline Fittings

### JAMEC PEM series

Ref. No.	Description	Thread	Hose diam.
109002	Coupler 310M4	1/4" male	
109005	Coupler 310F4	1/4" female	
109073	Fitting 31M4	1/4" male	
109089	Fitting 31F4	1/4" female	
109239	T-Piece MFF	1/4" male, 1/4" female	3/8"
109241	T-Piece BT6		3/8"
109242	T-PieceBT8		1/2"
109284	Hex fitting HN8 x4	1/2" male, 1/4" male	
109342	Reducing bush RB4 x2	1/4" male, 1/8" female	
109343	Reducing bush RB6 x4	3/8" male, 1/4" female	
109344	Reducing bush RB8 x4	1/2" male, 1/4" female	
109346	Adaptor FM6 x4	1/4" male, 3/8" female	
109282	Hex fitting	1/4" male	1/4" male



109002



109005



109073



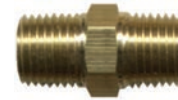
109089



109239



109241, 109242



109282



109343  
109344



109346

# AIR TOOLS AND INFLATION

## Airline Fittings

### NITTO series

Ref. No.	Description	Thread	Hose diameter
152011	Coupler 20SM	1/4" male	
152013	Coupler 20SF	1/4" female	
152015	Coupler 20SH		5/16"
152020	Coupler 30SF	3/8" female	
152025	Coupler 30SH		3/8"
152030	Coupler 30SM	3/8" male	
152101	Coupler 40SM	1/2" male	
152102	Coupler 40SH		1/2"
152104	Coupler 40SF	1/2" female	
152005	Fitting 20PM	1/4" male	
152006	Fitting 20PH		1/4"
152007	Fitting 25PH		5/16"
152009	Fitting 20PF	1/4" female	
152017	Fitting VG8	VG8 female	
152018	Fitting VG12	VG12 female	
152019	Fitting 30PH		3/8"
152021	Fitting 30PF	3/8" female	
152023	Fitting 30PM	3/8" male	
152100	Fitting 40PH		1/2"
152103	Fitting 40PM	1/2" male	
152150	Fitting 20PM Rotary	1/4" male	



152011, 152030, 152101



152013, 152104



152015, 152025, 152102



152020



152005



152006, 152007, 152100



152009



152017



152018



152019



152021



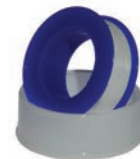
152023, 152103



152150

### Sealing tape

Ref. No.	Description
115928	Teflon thread sealing tape



115928

# AIR TOOLS AND INFLATION

## Airline Fittings

### Safety inflation cages



113315



113325



113321

Ref. No.	Description
113315	Safety cage 460 x 1220 x 1220 with certification <b>for use with:</b> <ul style="list-style-type: none"> <li>• 1 truck tyre</li> <li>• Engineer certification to withstand a catastrophic tyre/wheel failure</li> </ul>
113321	Safety cage 700 x 1450 x 1450 with certification <b>for use with:</b> <ul style="list-style-type: none"> <li>• 1 wide single tyre</li> <li>• Engineer certification to withstand a catastrophic tyre/wheel failure</li> </ul>
113325	Safety cage 305 x 915 x 915 <b>for use with:</b> <ul style="list-style-type: none"> <li>• 1 light truck tyre</li> </ul>

### Safety inflation straps



113309

Ref. No.	Description
113309	Rim safety restraint 1400 x 24 <ul style="list-style-type: none"> <li>• For road side fitters to safely inflate small EM/Grader wheels</li> <li>• Can be anchored to the floor</li> </ul>
113310	Rim safety restraint 1100 x 22.5 <ul style="list-style-type: none"> <li>• For road side fitters to safely inflate small light truck/truck bus wheels</li> <li>• Can be anchored to the floor</li> </ul>