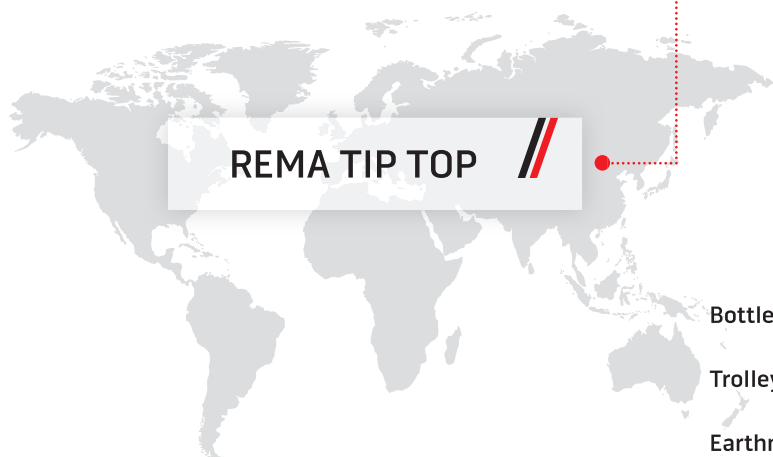


JACKING AND LIFTING



REMA TIP TOP

Bottle Jacks	180
Trolley jacks	181
Earthmover Equipment	186
Axle Stands & Wheel Chocks	187
Lifting Equipment	188

JACKING AND LIFTING

Bottle Jacks

Bottle jacks, manual hydraulic



205011



205013



205015



205017



205019



205021



205023



205024

Ref. No.	Description	Lifting capacity	Height	Lift	Extension screw height	Max height	Weight
205011	Masada, High	10,000 kg	240 mm	150 mm	80 mm	470 mm	7.9 kg
205013	Masada, Low	10,000 kg	170 mm	95 mm	75 mm	340 mm	6.4 kg
205015	Masada, High	15,000 kg	265 mm	165 mm	80 mm	510 mm	10.4 kg
205017	Masada, Low	15,000 kg	170 mm	90 mm	70 mm	330 mm	8 kg
205019	Masada, High	20,000 kg	270 mm	160 mm	n/a	305 mm	10.2 kg
205021	Masada, Low	20,000 kg	180 mm	85 mm	40 mm	470 mm	7.9 kg
205023	Masada, High	30,000 kg	280 mm	160 mm	n/a	470 mm	18.5 kg
205024	Masada, High	50,000 kg	305 mm	170 mm	n/a	475 mm	37 kg

JACKING AND LIFTING

Trolley jacks

Jack Trolley Compac



205400



205420



205430

Ref. No.	Description	Load limit	Closed height	Lift	Max height	Max frame height	Length	Width	Weight
205400	Compac Trolley	1,500	77 mm	480 mm	600 mm	126 mm	950 mm	380 mm	41 kg
205420	Compac Trolley	2,000	80 mm	500 mm	660 mm	160 mm	730 mm	380 mm	35 kg
205430	Compac Trolley	2,500	115 mm	500 mm	670 mm	170 mm	1015 mm	380 mm	42 kg

Trolley jacks, hydraulic Liftech



205309



205053



205055

Ref. No.	Description	Load limit	Closed height	Lift	Max height	Max frame height	Length	Width	Weight
205309	Liftech, low profile turbo	1,500 kg	68 mm	432 mm	500 mm	145 mm	710 mm	390 mm	43 kg
205053	Liftech, YM500 D	5,000 kg	150 mm	536 mm	686 mm	200 mm	1575 mm	428 mm	110 kg
205055	Liftech, YM1000 D	10,000 kg	160 mm	526 mm	686 mm	250 mm	1740 mm	528 mm	150 kg

JACKING AND LIFTING

Trolley jacks

Bottle jacks, air hydraulic



505250



505320



505322

Ref. No.	Description	Lifting capacity	Height	Lift	Extension screw height	Max height	Weight
505250	Bottle jack air/manual, LT120AH	20,000 kg	262 mm	160 mm	84 mm	506 mm	15.5 kg
505320	Bottle jack air/manual, Winntec	20,000 kg	245 mm	130 mm	95 mm	470 mm	16.5 kg
505322	Bottle jack air/manual, Winntec	20,000 kg	261 mm	146 mm	47 mm	400 mm	11 kg

Forklift jack



505044

Ref. No.	Description	Lifting capacity	Height	Lift	Extension screw height	Max height	Weight
205044	Forklift 4T 14350	4,000 kg	57 mm	120 mm	45 mm	406 mm	31 kg

JACKING AND LIFTING

Trolley jacks

Trolley jacks, air hydraulic



205160



205161



205187



205450

Ref. No.	Description	Lifting capacity	No. of stages	Closed height	Lifting height	Screw height	Operating pressure	Weight
205160	<p>YASUI YAJ-20C</p> <ul style="list-style-type: none"> • Air-hydraulic lifting system for all kinds of heavy transport vehicles • Piston is retracted by external springs • One piece handle • includes 3 piece extension set 	20,000 kg	1	205 mm	120 mm	105 mm	8-12 bar	46 kg
205161	<p>YASUI YAJ-40B</p> <ul style="list-style-type: none"> • Air-hydraulic lifting system for heavier vehicles • Piston is retracted by external springs • One piece handle • includes 3 piece extension set 	40,000 kg	1	215 mm	120 mm	74 mm	8-12 bar	65 kg
205187	<p>RODCRAFT LHH 22</p> <ul style="list-style-type: none"> • Air-hydraulic lifting system for all kinds of heavy transport vehicles • Piston is retracted by external springs • Two piece handle • includes 3 piece extension set. 20 mm, 60 mm, 100 mm 	20,000 kg	1	210 mm	115 mm	50 mm	8-12 bar	49 kg
205450	<p>COMPAC A4020-C</p> <ul style="list-style-type: none"> • Air / hydraulic lifting system for heavier vehicles • Long handle for better reach • Short design for easier manoeuvrability • includes 3 piece extension set. 10 mm, 70 mm, 120 mm 	20,000 / 40,000 kg	2	150 mm	300 mm	80 mm	8-12 bar	44 kg

JACKING AND LIFTING

Trolley jacks

Trolley jacks, air hydraulic - continued



205182



205183



205184



205163



205164

Ref. No.	Description	Lifting capacity	No. of stages	Closed height	Height per stage	Operating pressure	Weight
205182	LIFTECH LT215N <ul style="list-style-type: none"> • Air-hydraulic lifting system for all kinds of heavy transport vehicles • Piston is retracted automatically • Dual descent valve ensures constant and controllable speed under load, and increased speed when not under load • Heavy duty construction • Includes 3 piece extension set. 120 mm, 70 mm, 10 mm 	40,000 kg 20,000 kg	2	150 mm	222/300 mm	8-12 bar	39kg
205183	LIFTECH LT215L (long) <ul style="list-style-type: none"> • Air-hydraulic lifting system for all kinds of heavy transport vehicles • Piston is retracted automatically • Dual descent valve ensures constant and controllable speed under load, and increased speed when not under load • Heavy duty construction • Includes 3 piece extension set. 120 mm, 70 mm, 10 mm 	40,000 kg 20,000 kg	2	150 mm	222/300 mm	8-12 bar	39 kg
205184	LIFTECH LT218N (long) <ul style="list-style-type: none"> • Air-hydraulic lifting system for extremely heavy vehicles • Piston is retracted automatically 	60,000 kg 30,000 kg	2	180 mm	255/340 mm	8-12 bar	67 kg
205163	GAITHER GT3531 <ul style="list-style-type: none"> • Rigorously tested and constructed to withstand heavy daily use • Includes 3 piece extension set. 120 mm, 70 mm, 10 mm 	35,000 kg	1	185 mm	284 mm	8-14 bar	42 kg
205164	GAITHER GT4532 <ul style="list-style-type: none"> • Rigorously tested and constructed to withstand heavy daily use • Includes 3 piece extension set. 80 mm, 40 mm, 20 mm • 3 year warranty 	45,000 kg 25,000 kg	2	150 mm	280 mm	8-14 bar	45 kg

JACKING AND LIFTING

Trolley jacks

Jack - Accessories



205169



205193



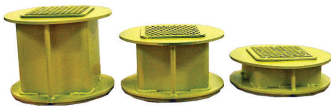
205194



205195

Ref. No.	Description
205169	Jack extension set • To suit Liftech jacks
205193	Gaither Jack Extension 80 mm
205194	Gaither Jack Extension 40 mm
205195	Gaither Jack Extension 20 mm

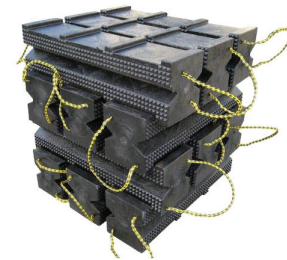
EM jacking - Accessories



205026



205028



205041

Ref. No.	Description
205026	Crib stand set • Stackable to a total of 450 mm • Recessed area on each crib fits 175 mm square plate on 55 ton cylinders • Avoid loading uncertainty by using load rated cribbing
205028	Jack plate non-skid surface • Rated to 100 tons
205041	Super Stack Cribbing Blocks, set of 12 • 6" x 7" x 24" each • Rated up to 150,000kg (depending on configuration) • Resists oil and most chemicals • Interlocking of aggressive non slip surface • Requires Jack plate 205028 to achieve maximum load rating.
205043	Super Stack Cribbing Block, single • 6" x 7" x 24"

JACKING AND LIFTING Earthmover Equipment

Lifting jacks

- The lifting jacks are manufactured from aluminium and are particularly lightweight
- Aluminium base plate ensures stability
- Used with air/hydraulic pumps 5191535, 5191530
- Shut-off valve allows the pump to be removed when the ram is extended
- Heavy lifting in a light weight construction



205030



205031



205032



205061

Ref. No.	Description	Lifting capacity	Lifting height	Cylinder movement	Weight
205030	Bottle jack 55 ton aluminium AME 13080 <ul style="list-style-type: none"> • Extra thick aluminium cylinder walls (2cm) for heavy duty use • Base plate for stability during use 	55 T	455 mm	150 mm	14.5 kg
205031	Bottle jack 55 ton aluminium AME 13121 <ul style="list-style-type: none"> • Modified base plate no more broken bolts or bent/broken corners • Recessed base plate for stability during use 	55 T	450 mm	150 mm	13.2 kg
205032	Bottle jack 100 ton aluminium AME 13000 <ul style="list-style-type: none"> • Extra thick aluminium cylinder walls (2cm) for heavy duty use 	100 T	450 mm	150 mm	24 kg
205061	Bottle jack 55T Load Locker AME 13154 <ul style="list-style-type: none"> • Aluminium lock nut provides mechanical load holding for extended periods • Composite bearings increase cylinder life • Equipped with bolt-on hardened steel saddle • Hard coat finish resists damage and extends cylinder life. 				

JACKING AND LIFTING

Axle Stands & Wheel Chocks

Axle Stands

• All axle stands are tested for the listed load capacities, but users are advised that all axle stands must be used on firm level surfaces, and every care taken to ensure that no movement

of the vehicle takes place by either applying the handbrake or chocking the other wheels.

• Australian Standards Certified



180204, 180206
180202



180199

Ref. No.	Working Load Limit	Closed Height	Max Height	Base Size	Weight	Contents
180204	3000Kg	295 mm	433 mm	190x225 mm	11.6Kg/pair	Pair
180199	5000Kg	276 mm	445 mm	345x345 mm	11.6Kg/pair	Pair
180206	5000Kg	394 mm	622 mm	266x300 mm	16.2Kg/pair	Pair
180202	8000Kg	445 mm	700 mm	307x274 mm	26.1Kg/pair	Pair

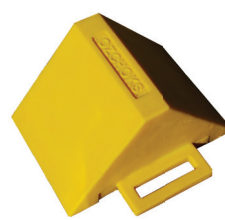
Wheel Chocks



115756



115757



115758



115759

Ref. No.	Description	Length	Width	Height	Weight
115756	Wheel Chock	230 mm	180 mm	140 mm	4.5 kg
115757	Wheel Chock	250 mm	190 mm	160 mm	1.1 kg
115758	Wheel Chock	470 mm	260 mm	330 mm	10 kg
115759	Wheel Chock	660 mm	410 mm	420 mm	18 kg

JACKING AND LIFTING

Lifting Equipment



113352

Ref. No.	Description	Width	Lenght	Height	Weight
113352	Smart cart Tyre / Wheel Trolley <ul style="list-style-type: none">• Extra thick aluminium cylinder walls (2cm) for heavy duty use• Base plate for stability during use• Longer aim for more leverage.• An improved spring mechanism and a release bar to better grab and release tyres.	150 mm	150 mm	550 mm	37 kg

TRAINING

REMA TIP TOP Australia provides more than products

Our team of experienced industry experts is available to assure that our customers and business partners are trained in the correct use and application of the products we sell.

It is one of our strengths to be the leading source of general and technical expertise in the various fields of our business.

We organise standardised courses and individually customised training programs to suit the specific needs of the customer.

Either hands on or classroom style, compact or more extensive, during or after hours – REMA TIP TOP is flexible!

Please contact our local sales representative, state warehouse or head office (see page 3 for contact details) to find out what type of training package we can provide for you.

Subjects include:

- Tyre repair in its various forms (All our repair courses comply to Australian Standards.)
 - Nailhole / Combiplug (Minicombi) repairs / Remastem
 - String repair
 - Patch application
 - Truck and bus tyres - section repairs
 - Repair for retreaders
 - EM / OTR / Agricultural tyres major repair
 - Use of vulcanising equipment
- Regrooving
- Use of lubricants – characteristics and application
- Air tools, torque wrenches and other tools for the tyre service - selection, use and maintenance
- Balancing compounds, technology, functionality and application.
- Balance weights – different types and their application and benefits
- Valves for all vehicle types – application and quality criteria
- TPMS - Diagnostic Tool Programming
- TPMS - Training and Service
- General safety in the tyre workshop

For specific training courses, we issue certificates for all attendees.



INDEX OF PRODUCTS

102116	134	103273	133	103384G	87	108995	117	112575	44	115054	91
103042	130	103276	142	103384H	87	109447	99	112577	43	115055	91
103043	131	103295	132	103384J	88	109608	99	112578	43	115056	91
103044	131	103296	132	103384K	88	112285	46	112579	45	115058	91
103045	131	103305	99	103384L	88	112290	43	112580	45	115061	91
103046	130	103309	100	103384M	88	112307	41	112582	45	115063	94
103047	130	103312	100	103384N	88	112308	41	112583	45	115065	91
103050	130	103314	100	103384P	88	112432	41	112584	46	115066	91
103053	130	103315	100	103384Q	88	112438	40	112585	45	115067	94
103062	131	103316	100	103384R	88	112439	40	112586	45	115068	94
103072	137	103317	100	103384S	88	112440	40	112587	45	115069	94
103076	137	103318	100	103384T	88	112443	40	112595	42	115070	91
103077	137	103320	100	103384U	88	112446	40	112597	43	115071	94
103080	132	103324	101	103384V	88	112450	40	112598	43	115072	91
103085	132	103335	99	103384W	88	112454	40	112600	42	115073	94
103091	137	103336	99	103384X	88	112460	40	112602	42	115074	91
103092	137	103339	99	103384Y	88	112466	40	112603	45	115075	94
103093	137	103380	87	103384Z	88	112473	41	112627	77	115076	94
103094	137	103381	89	103441	137	112478	41	112629	77	115110	94
103095	137	103382	89	103450	99	112484	41	112631	77	115111	94
103096	137	1033840	87	103510	133	112485	41	112633	77	115117	95
103242	101	1033840	88	103583	10	112499	41	112636	77	115126	95
103247	100	1033841	87	103587	10	112502	59	113317	69	115127	95
103249	132	1033841	87	103590	10	112520	40	113351	75	115133	96
103252	133	1033842	87	103592	9	112535	42	113352	75	115135	96
103253	132	1033843	87	103593	9	112539	43	113621	78	115141	92
103254	133	1033844	87	103596	9	112551	44	113630	78	115145	92
103255	132	1033845	87	103917	128	112552	44	115030	96	115146	92
103256	131	1033846	87	103919	128	112554	33	115038	91	115148	92
103257	132	1033847	87	108312	99	112556	44	115039	92	115152	92
103258	133	1033848	87	108335	101	112558	42	115040	91	115153	93
103259	133	1033849	87	108336	101	112559	42	115041	91	115156	92
103262	133	103384A	87	108337	101	112560	43	115042	92	115158	92
103263	133	103384B	87	108339	101	112561	43	115043	91	115161	93
103266	133	103384C	87	108340	101	112562	42	115046	92	115164	92
103267	132	103384D	87	108600	78	112565	44	115050	91	115165	93
103268	133	103384E	87	108966	81	112569	44	115052	94	115166	93
103271	133	103384F	87	108990	117	112574	44	115053	91	115167	93

INDEX OF PRODUCTS

115168	94	115248	93	115370	85	115702	66	115877	103	115919	116
115169	93	115252	93	115371	85	115703	66	115880	103	115920	113
115170	93	115253	94	115372	85	115711	63	115881	103	115921	116
115171	93	115255	93	115373	85	115712	63	115882	103	115922	113
115172	96	115257	93	115374	85	115713	65	115883	114	115923	114
115174	95	115264	93	115375	85	115714	63	115884	103	115924	113
115175	96	115266	93	115376	85	115716	78	115885	104	115925	114
115176	73	115269	93	115378	85	115717	78	115886	104	115926	114
115179	96	115271	94	115381	83	115719	65	115887	104	115927	114
115180	95	115272	93	115382	85	115721	71	115888	104	115930	113
115182	93	115280	95	115390	84	115722	71	115889	115	115931	113
115183	93	115281	95	115391	84	115723	83	115890	115	115932	116
115184	93	115282	95	115392	84	115725	109	115891	115	115933	116
115185	93	115284	95	115393	84	115726	71	115892	115	115934	114
115186	93	115286	95	115394	84	115727	71	115893	115	115935	114
115187	93	115287	95	115395	84	115729	71	115894	113	115936	114
115188	93	115288	95	115396	84	115740	71	115895	115	115937	31
115189	95	115289	95	115397	84	115741	72	115896	113	115940	115
115190	73	115291	74	115398	84	115742	72	115897	115	115941	115
115194	73	115293	96	115399	84	115743	71	115898	113	115942	116
115197	92	115295	74	115400	84	115745	71	115899	113	115943	114
115198	92	115298	74	115401	84	115746	71	115900	113	115944	114
115199	92	115353	83	115402	68	115747	71	115901	113	115945	114
115200	73	115354	83	115403	68	115748	71	115902	113	115946	114
115202	93	115355	83	115405	68	115749	71	115903	113	115947	114
115203	93	115356	83	115406	68	115750	66	115904	113	115948	114
115205	93	115357	83	115408	69	115752	66	115905	113	115949	114
115206	73	115358	83	115417	84	115773	38	115906	113	115952	114
115207	92	115359	83	115418	84	115851	85	115907	113	115953	114
115208	92	115360	83	115419	84	115852	60	115908	113	115961	102
115209	95	115361	83	115452	65	115856	85	115909	113	115962	102
115214	96	115363	83	115462	73	115864	104	115910	116	115963	102
115215	96	115364	83	115630	66	115866	103	115911	113	115964	102
115220	96	115365	83	115690	66	115870	103	115913	113	115966	102
115240	73	115366	83	115691	66	115873	103	115915	115	115968	102
115243	93	115367	83	115692	66	115874	115	115916	113	115971	102
115245	93	115368	83	115695	66	115875	103	115917	114	115973	102
115246	93	115369	83	115696	66	115876	115	115918	116	115974	102

INDEX OF PRODUCTS

115976	102	124702	35	136726	60	156147	123	156262	126	156634	136
115985	117	124704	35	136795	60	156148	123	156266	125	156636	136
115987	117	124706	35	150634	66	156149	123	156268	125	156645	137
115989	117	124708	35	150648	62	156150	125	156270	125	156650	137
115990	117	124783	35	150650	62	156152	123	156271	125	156670	137
116110	104	124789	32	150651	62	156153	126	156272	125	156675	137
116112	104	124791	32	150652	62	156154	124	156273	125	156690	137
116114	105	124792	35	150653	78	156159	137	156274	125	156700	137
116115	105	124793	35	150655	62	156160	123	156275	125	156730	137
116119	105	124798	32	150656	62	156161	125	156276	125	156750	137
116120	105	124799	35	150660	66	156162	124	156278	126	156760	137
116130	105	129059	91	150661	68	156163	124	156308	129	156771	135
116150	105	129080	91	150662	67	156164	123	156335	129	156772	135
119460	39	129145	91	150663	68	156165	123	156341	130	156773	135
119510	96	129159	91	150664	68	156167	124	156342	124	157140	134
119560	98	129160	91	150665	67	156169	123	156343	130	157141	134
119562	98	129559	64	150666	67	156170	124	156345	129	157145	134
119564	98	129560	64	150667	67	156171	124	156350	129	160202	122
119566	98	129562	64	150669	67	156172	124	156352	130	160203	122
119568	98	129564	64	150670	67	156173	124	156355	129	160204	122
119570	98	130025	64	150672	67	156174	124	156357	130	160205	122
119572	98	130027	64	150673	78	156176	124	156370	129	160206	122
119584	95	135048	39	150674	78	156177	124	156372	130	160207	122
119585	95	135050	39	150677	67	156210	140	156384	129	160208	122
119586	95	135052	39	150678	67	156215	140	156388	129	160209	122
119587	96	135055	39	152000	33	156216	140	156390	129	160210	139
123560	90	135056	39	156026	140	156220	140	156392	130	160213	122
123601	32	135057	39	156027	140	156222	138	156397	129	160214	122
123602	32	135200	59	156032	128	156223	137	156399	129	160215	139
123603	32	135203	59	156040	127	156225	138	156400	129	160218	139
123604	32	135204	59	156079	122	156227	137	156401	129	160219	139
123610	32	135207	59	1561390E	121	156228	138	156402	129	160220	138
124072	90	136700	60	156139	121	156230	141	156411	122	160221	138
124088	90	136701	60	156141	124	156231	141	156420	128	160228	123
124100	90	136702	60	156142	124	156232	141	156424	128	160229	123
124522	35	136708	60	156143	126	156239	141	156425	128	160990	110
124700	35	136710	60	156145	125	156249	128	156426	128	170000	110
124701	35	136724	60	156146	125	156250	126	156427	128	170101	31

INDEX OF PRODUCTS

170102	31	170280	32	175007	58	180920	97	5010040	12	5101942	16
170120	126	170290	10	175008	58	180921	97	5010088	12	5101959	16
170120	127	170299	141	175009	58	180922	97	5010089	120	5102147	10
170130	109	170302	36	175012	58	180923	97	5010136	12	5102161	10
170201	109	170306	36	175014	58	180924	97	5010150	12	5102202	11
170202	109	170309	36	175100	58	180925	97	5010174	12	5102219	11
170204	110	170313	36	175105	58	205034	81	5010277	12	5102226	11
170214	65	170325	30	175110	58	205035	81	5010545	12	5102233	11
170215	30	170326	30	175115	58	205036	81	5050055	27	5102240	10
170216	30	170330	109	175200	57	205038	81	5050127	27	5102305	10
170217	36	170403	141	175205	58	205040	81	5050141	27	5102336	10
170219	36	170405	60	175207	58	215708	63	5050725	27	5103408	11
170220	36	170408	60	175210	58	215710	63	5050824	27	5111310	34
170221	37	170415	60	175215	58	215711	63	5050866	27	5111320	34
170222	37	170416	108	180205	90	215712	63	5050890	111	5111781	34
170223	38	170417	108	180221	81	215713	63	5050892	111	5111798	34
170224	37	170418	108	180223	81	215715	63	5050894	111	5111808	16
170225	31	170428	59	180227	81	257160	126	5059198	27	5111964	16
170226	35	170430	59	180228	81	315711	63	5059246	27	5113042	16
170227	80	170432	59	180229	81	315712	63	5060006	8	5113058	16
170228	36	170434	59	180245	90	315713	63	5060308	6	5113106	16
170229	79	170436	59	180320	112	413CSC	139	5060352	8	5113144	16
170231	80	170438	59	180325	32	413CSS	139	5060376	8	5121104	18
170232	79	170442	59	180400	111	413NCCL	121	5060455	8	5121160	18
170234	79	170450	59	180410	111	413NCOE	121	5060518	6	5121207	18
170237	79	170451	59	180500	107	413NC	121	5060912	6	5121221	18
170238	79	170470	106	180600	108	415NC	121	5070012	7	5121245	18
170242	90	170480	106	180703	108	418NC	121	5070311	7	5121252	18
170254	36	170501	102	180708	108	5000029	13	5070603	7	5121360	18
170255	141	170503	141	180715	108	5000036	13	5101165	10	5121403	18
170258	79	170504	142	180727	108	5000043	13	5101801	10	5121427	18
170259	79	170505	112	180750	108	5000050	13	5101818	10	5121441	18
170260	141	170507	142	180900	97	5000067	13	5101820	10	5121465	18
170269	80	170508	142	180902	97	5000081	13	5101833	9	5121506	18
170270	38	170510	102	180905	97	5000108	13	5101848	9	5121520	18
170272	38	170932	79	180907	97	5000122	13	5101863	10	5121551	18
170274	38	175000	57	180910	97	5000201	13	5101928	16	5121568	18
170275	35	175006	58	180912	97	5000263	13	5101935	16	5121609	18

INDEX OF PRODUCTS

5121623	18	5126219	22	5173310	55	5177804	53	5199352	101	5587391	89
5121654	18	5126233	22	5173327	49	5190977	87	5199353	100	5587401	89
5121685	18	5126240	22	5173365	49	5191528	81	5199354	100	5587418	89
5121757	18	5126257	22	5173510	27	5191529	82	5199355	101	5587425	89
5121805	18	5141633	106	5173523	27	5191530	82	5199357	101	5587432	89
5121829	18	5159005	29	5173570	48	5191535	82	5199359	101	5587449	89
5121843	18	5159012	29	5173571	48	5191537	82	5381009	56	5587456	89
5121852	18	5159027	29	5173572	48	5193651	83	5381377	29	5587463	89
5121867	18	5159030	29	5173640	48	5193778	83	5381676	29	5587470	89
5121881	18	5159225	29	5173963	49	5193812	76	5525683	6	5587487	89
5122000	23	5159329	28	5173970	49	5193838	77	5573783	57	5587494	89
5122017	23	5159337	28	5175002	52	5193857	83	5573972	57	5587504	89
5122024	23	5159342	28	5175002	52	5193885	76	5574013	57	5587511	89
5122031	23	5159388	28	5175033	56	5193898	76	5578410	57	5587528	89
5122048	23	5159397	28	5175040	56	5193900	76	5580082	57	5587535	89
5122055	23	5159407	28	5175215	55	5193901	76	5587195	88	5587542	89
5122062	23	5159410	28	5175222	55	5193902	76	5587205	88	5587559	89
5122079	23	5159431	28	5175239	56	5193903	76	5587212	88	5599156	51
5125020	17	5159571	28	5175246	56	5193904	76	5587229	88	5599218	51
5125040	17	5161009	26	5175260	56	5193907	77	5587236	88	5599232	51
5125060	17	5161164	26	5175727	53	5193963	118	5587243	88	5599248	51
5125080	17	5161180	26	5175734	57	5193967	118	5587250	88	5599976	51
5125100	17	5161250	26	5175961	56	5193968	118	5587267	88	5599998	51
5125120	17	5161267	26	5176032	55	5193974	118	5587274	88	5620007	134
5125810	22	5161274	26	5176040	55	5196603	33	5587281	88	5620045	134
5125830	22	5169032	30	5176207	56	5196605	33	5587298	88	5620047	134
5125850	22	5169041	30	5176252	55	5196610	33	5587315	88	5620050	134
5125870	22	5169207	29	5176276	56	5196627	33	5587322	88	5620083	134
5125890	22	5169214	29	5176977	50	5196634	33	5587322	88	5620100	139
5126037	22	5171525	48	5177165	50	5196636	33	5587339	88	5620124	140
5126044	22	5171958	49	5177189	48	5196641	33	5587339	89	5620155	139
5126051	22	5171965	50	5177323	30	5196672	33	5587346	88	5620296	138
5126068	22	5171972	50	5177330	30	5196689	33	5587346	89	5620298	138
5126075	22	5171989	50	5177402	30	5196692	33	5587353	88	5620368	140
5126082	22	5172438	50	5177516	58	5198043	66	5587353	89	5621013	122
5126099	22	5173231	50	5177701	52	5198050	66	5587360	89	5622012	120
5126109	22	5173255	50	5177701	52	5198780	69	5587377	89	5622067	120
5126202	22	5173310	49	5177804	52	5199150	70	5587384	89	5622081	120

5622561	121	5624443	136	5635023	126	5932150	111	5954168	35	595886536	42
56225620E	121	5624444	136	5635030	126	5940000	32	5954209	42	595886546	42
5622562	121	5624452	136	5635054	126	5940420	32	5954214	42	595886560	42
56225660E	121	5624454	136	5635057	126	5940430	32	5954223	42	5958872	45
5622566	121	5624455	136	5640128	87	5940580	32	5954230	42	5958889	45
5622570	121	5624515	135	5640580	87	5950021	37	5954247	42	5958890	45
5622603	122	5624560	135	5640820	87	5950038	37	5954248	42	5958896	45
5622608	122	5624577	135	5641200	86	5950045	102	5954248	42	5958913	45
56226270E	121	5624584	135	5641220	86	5950076	35	5954261	33	5958920	44
5622627	121	5624586	136	5642858	86	5950083	36	5954285	47	5960114	37
5622628	121	5624587	136	5642865	86	5950431	47	5954288	46	5960121	37
5622630	121	5624588	136	5642872	86	5950461	47	5954290	46	5961027	31
5622634	121	5624589	136	5642889	86	5950490	47	5954296	46	5961034	31
5622636	121	5626829	125	5642896	86	5950629	36	5954298	46	8398817	11
5622638	121	5626830	124	5642906	86	5950650	36	5954299	46	8398824	11
5622641	121	5626939	127	5649000	86	5950681	36	5954560	35	9170777	69
5622645	120	5628119	141	5709270	32	5950722	35	5954562	35	9174518	70
5623042	127	5628305	142	5709440	110	5950753	45	5954900	34	9942509	69
5623066	127	5628309	142	5709992	126	5950849	31	5954917	34	9958308	112
5623080	127	5628377	142	5709995	127	5950928	47	5954924	34	9958310	112
5623082	127	5628384	142	5709996	100	5951044	31	5954931	34	9958315	112
5623097	127	5628401	120	5709997	126	5951123	31	5954955	34		
5623107	127	5629637	129	5798626	7	5951154	31	5956032	112		
5623114	127	5629638	130	5798628	6	5951178	37	5958308	112		
5623138	128	5629640	130	5930150	111	5951289	47	5958308	30		
5624010	135	5629641	128	5930412	110	5951305	47	5958346	30		
5624027	135	5629644	129	5930436	110	5951381	47	5958528	102		
5624034	135	5629660	130	5930443	110	5952012	37	5958791	43		
5624041	135	5629698	131	5930508	107	5952036	38	5958792	43		
5624072	135	5629699	131	5930516	107	5952050	37	5958793	43		
5624096	135	5629709	128	5930539	107	5952067	37	5958795	43		
5624261	136	5629711	128	5930553	106	5952074	37	5958810	43		
5624292	135	5629747	129	5930591	106	5952139	38	5958827	43		
5624293	135	5629749	130	5930618	112	5952177	37	5958858	43		
5624319	135	5629761	130	5930625	106	5952184	37	5958860	43		
5624326	135	5631900	12	5930649	31	5952191	37	5958861	43		
5624412	136	5635016	126	5931851	106	5952287	38	595886518	42		
5624436	136	5635022	126	5931875	106	5952304	38	595886523	42		



REMA TIP TOP – Product Catalogue

Editor:

REMA TIP TOP Australia Pty Limited
Business Unit Automotive
Building 3/20 Worth Street
Chullora NSW 2190
Phone +61 (0)2 8755 8400
Fax +61 (0)2 9742 3159
E-Mail info@rema-tiptop.com.au
www.rema-tiptop.com.au

Legal Notice:

Copyright© 2018
REMA TIP TOP Australia Pty Limited

- * All information is given to the best of our knowledge.
 - * All specifications are to be considered non-binding information.
 - * Any claim for damages of any kind is excluded.
 - * We reserve the right to change technical specifications without prior notice, provided that they ensure product improvement.
 - * The information presented is based on technical experience but does not guarantee a product's suitability for specific applications, and does not relieve the users of the responsibility to undertake their own testing, including where any third-party trademark rights are concerned.
 - * Pictures in the catalogue may contain optional accessories which are not included in the standard shipment, and need to be ordered additionally.
-
- * All relevant product information can be found in the respective documents, including operating instructions, technical datasheets as well as conditions for storage and application.
 - * The specified qualities of our products are based on information from the accompanying inspections for approval. They represent statistical product data and are not to be considered as guaranteed properties of an individual product.
 - * In order to preserve product properties, the storage conditions indicated in DIN 7716 should be followed (including storing the product in the original package and in an area that is dry, cool and dark).

Attention:

Unless otherwise noted, the Contents is one and will not be listed separately.