



// ONE BRAND // ONE SOURCE // ONE SYSTEM



Wear Protection Lining

Our complete range of Wear Protection Lining products.

Wear Protection Lining

REMA PERFORMANCEline 4

High quality rubber lining.

REMALINE 6

The perfect way to reliable production planning.

REMASTAR 10

Premium quality with extreme abrasion resistance.

UNILINE 11

The lining for simple applications and wet wear.

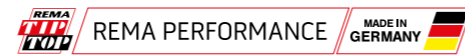
REMATHAN 13

High-quality polyurethane lining material.



WEAR PROTECTION LINING

REMA PERFORMANCEline – High-quality rubber lining material



REMA PERFORMANCEline 35/CN – Premium quality for wet processing

REMA PERFORMANCEline 35/CN is a first class wear protection product for wet processing. Whether sand, gravel, or clay: when processing round grain and sticky materials, the rubber lining is characterized by its excellent abrasion value. Thanks to the further developed formula, the soft rubber compound is designed especially for wet processing and slurry handling. The added value for customers: An additional improved service life, lower maintenance costs and optimized plant performance.



REMA PERFORMANCEline 35

Properties

- Highly wear-resistant, especially resistant to wet abrasion
- Safe protection against material build-up
- Highly elastic
- Excellent self-cleaning capability
- Simple and easy to bond with REMA TIP TOP Premium bonding layer
- Improved abrasion

Area of application

- Slurry handling
- Lining of slurry chutes, pipes, pumps, hydrocyclones, flotation cells, tanks and launders for example in the sand and gravel industry
- Chutes / discharge hoses for ready mixed concrete
- Lining of excavator buckets to prevent caking

REMA PERFORMANCEline 35/CN

Specifications

Polymer basis	NR	DIN ISO 1629
Specific weight	0.98 g/cm ³	DIN EN ISO 1183-1
Hardness	38 Shore A	DIN ISO 7619-1
Colour	Black	
Tear growth resistance	7 N/mm	ISO 34-1 Method A

Ref. No.	Designation	Dimensions	Weight
521 0182	REMA PERFORMANCEline 35/CN	6x2000x10000 mm	6,90 kg/m ²
521 0186	REMA PERFORMANCEline 35/CN	8x2000x10000 mm	8,96 kg/m ²
521 0192	REMA PERFORMANCEline 35/CN	10x2000x10000 mm	11,00 kg/m ²
521 0197	REMA PERFORMANCEline 35/CN	12x2000x10000 mm	12,96 kg/m ²
521 0222	REMA PERFORMANCEline 35/CN	15x2000x10000 mm	16,20 kg/m ²

*Special properties available upon request.

WEAR PROTECTION LINING

REMA PERFORMANCEline – High-quality rubber lining material



REMA PERFORMANCEline 70 – The optimum wear protection solution

REMA PERFORMANCEline 70/CN is the optimum wear protection solution for extreme loads and a premium abrasion resistance. Due to the perfectly matched technical values REMA PERFORMANCEline 70/CN provides an excellent tensile strength, and an improved tear growth resistance. As a result, material transfers and other system components with wear and impact problems are optimally equipped.



REMA PERFORMANCEline 70

Properties

- Superior resistance to wear
- Excellent resistance to abrasion
- Extremely high tensile strength
- Good weather resistance
- Simple and easy to bond with REMA TIP TOP Premium bonding layer
- Improved abrasion
- Improved elongation at break

Area of application

- Material transfer points, chutes, bunkers and slides
- Lining for truck bodies, Impact curtains and vibrating conveyors
- Lagging for non-driven pulleys with moderate to high belt tension
- Cold refurbishing of conveyor belts
- Mill lining

REMA PERFORMANCEline 70/CN

Specifications

Polymer basis	NR/BR	DIN ISO 1629
Specific weight	1.12 g/cm ³	DIN EN ISO 1183-1
Hardness	65 Shore A	DIN ISO 7619-1
Colour	Black	

Ref. No.	Designation	Dimensions	Weight	Special properties*
521 0182	REMA PERFORMANCEline 70/CN	3 x 1 500 x 10 000 mm	4.14 kg/m ²	REMA PERFORMANCEline 70/EP160 Fabric reinforced wear protection solution.
521 0186	REMA PERFORMANCEline 70/CN	5 x 2 000 x 10 000 mm	6.30 kg/m ²	
521 0192	REMA PERFORMANCEline 70/CN	6 x 2 000 x 10 000 mm	7.25 kg/m ²	
521 0197	REMA PERFORMANCEline 70/CN	8 x 2 000 x 10 000 mm	9.24 kg/m ²	
521 0202	REMA PERFORMANCEline 70/CN	10 x 2 000 x 10 000 mm	11.90 kg/m ²	
521 0207	REMA PERFORMANCEline 70/CN	12 x 2 000 x 10 000 mm	14.10 kg/m ²	
521 0212	REMA PERFORMANCEline 70/CN	15 x 2 000 x 10 000 mm	17.40 kg/m ²	
521 0217	REMA PERFORMANCEline 70/CN	20 x 2 000 x 10 000 mm	23.20 kg/m ²	
521 0222	REMA PERFORMANCEline 70/CN	25 x 2 000 x 10 000 mm	28.75 kg/m ²	

*Special properties available upon request.

WEAR PROTECTION LINING
REMALINE – High-quality rubber lining material

REMALINE MP 35 – The perfect way to reliable production planning

REMALINE MP 35/CN puts an end to premature, unplanned system downtime and unnecessary maintenance and standstill costs! This new development, which points the way to the future of lining materials, offers you more than just first-class surface protection. It also gives you a timely reminder when the lining needs to be renewed. Thus, you can easily plan and schedule to ensure smooth-running production processes, and significantly increased system productivity. A decisive advantage, particularly where it is difficult to check the thickness of the lining using conventional methods.



REMALINE MP 35

Properties

- Safe protection against wear and material build-up with built-in wear indicator
- Yellow wear layer
- Red signal layer
- Very wear resistant, particularly for wet use
- Very elastic
- High self-cleaning effect
- Noise damping; reduces dust formation
- CN bonding layer provides fast and good adhesion

Area of application

- Especially suitable for conveying components that are hard to access and inspect by conventional methods
- Lining of drains, pipes, hydrocyclones, flotation cells, tanks, etc for example in the sand and gravel industry
- Slurry handling
- Flexilo and bunker lining
- Lining of excavator buckets to prevent caking

REMALINE MP 35/CN

Specifications

Polymer basis	NR	DIN ISO 1629
Specific weight	0.96 g/cm ³	DIN EN ISO 1183-1
Hardness	33 Shore A	DIN ISO 7619-1
Colour	Yellow/Red*	

Ref. No.	Designation	Dimensions	Signal layer	Weight
549 1710	REMALINE MP 35/CN	6(4) x 2 000 x 10 000 mm	2 mm	6.9 kg/m ²
549 1720	REMALINE MP 35/CN	10(6) x 2 000 x 10 000 mm	4 mm	11 kg/m ²
549 1730	REMALINE MP 35/CN	12(8) x 2 000 x 10 000 mm	4 mm	12.96 kg/m ²
549 1740	REMALINE MP 35/CN	15(11) x 2 000 x 10 000 mm	4 mm	16.20 kg/m ²
549 1750	REMALINE MP 35/CN	20(16) x 2 000 x 10 000 mm	4 mm	21.60 kg/m ²

Special properties*

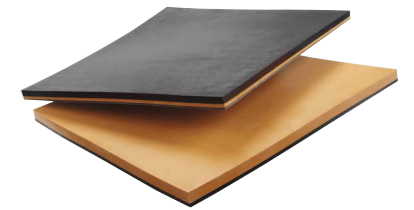
REMALINE 35/EP160
Fabric reinforced premium quality for wet wear and build up.

*Please note that this is a product based on natural rubber and therefore variations in color may occur.
*Special properties available upon request.

WEAR PROTECTION LINING
REMALINE – High-quality rubber lining material

REMALINE MP 40 – The perfect way to reliable production planning

REMALINE MP 40 puts an end to premature, unplanned system downtime and unnecessary maintenance and standstill costs! This new development, which points the way to the future of lining materials, offers you more than just first-class surface protection. It also gives you a timely reminder when the lining needs to be renewed. Thus, you can easily plan and schedule to ensure smooth-running production processes, and significantly increased system productivity. A decisive advantage, particularly where it is difficult to check the thickness of the lining using conventional methods.



REMALINE MP 40

Properties

- Safe protection against wear and material build-up with built-in wear indicator
- Orange wear layer
- Black signal layer
- Very wear resistant, particularly for wet use
- Very elastic
- High self-cleaning effect
- Noise damping; reduces dust formation
- CN bonding layer provides fast and good adhesion

Area of application

- Especially suitable for conveying components that are hard to access and inspect by conventional methods
- Lining of drains, pipes, hydrocyclones, flotation cells, tanks, etc for example in the sand and gravel industry
- Slurry handling
- Flexilo and bunker lining
- Lining of excavator buckets to prevent caking

REMALINE MP 40/CN

Specifications

Polymer basis	NR	DIN ISO 1629
Specific weight	1.05 g/cm ³	DIN EN ISO 1183-1
Hardness	44 Shore A	DIN ISO 7619-1
Colour	Orange/Black**	

Ref. No.	Designation	Dimensions	Signal layer	Weight
549 1630	REMALINE MP 40/CN	6(4) x 2000 x 10 000 mm	2 mm	6.80 kg/m ²
549 1631	REMALINE MP 40/CN	8(6) x 2000 x 10 000 mm	2 mm	9.15 kg/m ²
549 1632	REMALINE MP 40/CN	10(6) x 2000 x 10 000 mm	4 mm	11.13 kg/m ²
549 1633	REMALINE MP 40/CN	12(8) x 2000 x 10 000 mm	4 mm	13.23 kg/m ²
549 1634	REMALINE MP 40/CN	15(11) x 2000 x 10 000 mm	4 mm	16.85 kg/m ²
549 1635	REMALINE MP 40/CN	20(16) x 2000 x 10 000 mm	4 mm	21.84 kg/m ²
549 1636	REMALINE MP 40/CN	25(21) x 2000 x 10 000 mm	4 mm	27.04 kg/m ²
549 1490	REMALINE MP 40/CN	50(40) x 2000 x 5 000 mm	10 mm	54.08 kg/m ²

Special properties*

REMALINE 40/EP160
Fabric reinforced universal lining for many applications.

REMALINE 40 OIL
Oil and grease resistant universal lining.

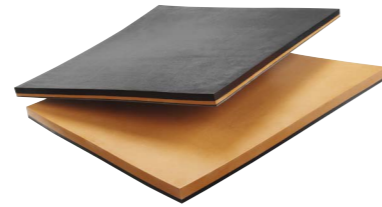
REMALINE 40 White Food
Universal food lining for many applications.

**Please note that this is a product based on natural rubber and therefore deviations in color may occur.
*Special properties available upon request.

WEAR PROTECTION LINING
REMALINE – High-quality rubber lining material

REMALINE MP 60 – The perfect way to reliable production planning

REMALINE MP 60 puts an end to premature, unplanned system downtime and unnecessary maintenance and standstill costs! This new development, which points the way to the future of lining materials, offers you more than just first-class surface protection. It also gives you a timely reminder when the lining needs to be renewed. Thus, you can easily plan and schedule to ensure smooth-running production processes, and significantly increased system productivity. A decisive advantage, particularly where it is difficult to check the thickness of the lining using conventional methods.



REMALINE MP 60

Properties

- Safe protection against wear and material build-up with built-in wear indicator
- Black wear layer
- Orange signal layer
- Excellent wear resistance to dry abrasion and impact
- Very elastic
- High self-cleaning effect
- Noise damping; reduces dust formation
- Good weather resistance
- CN bonding layer provides fast and good adhesion

Area of application

- Especially suitable for conveying components that are hard to access and inspect by conventional methods
- Lining of drains, pipes, hydrocyclones, flotation cells, tanks, etc for example in the sand and gravel industry

REMALINE MP 60/CN

Specifications

Polymer basis	BR/IR/SBR/NR	DIN ISO 1629
Specific weight	1.13 g/cm ³	DIN EN ISO 1183-1
Hardness	60 Shore A	DIN ISO 7619-1
Colour	Black/Orange	

Ref. No.	Designation	Dimensions	Signal layer	Weight
549 1640	REMALINE MP 60/CN	6(4) x 2 000 x 10 000 mm	2 mm	7.27 kg/m ²
549 1641	REMALINE MP 60/CN	10(6) x 2 000 x 10 000 mm	4 mm	11.91 kg/m ²
549 1642	REMALINE MP 60/CN	12(8) x 2 000 x 10 000 mm	4 mm	14.28 kg/m ²
549 1643	REMALINE MP 60/CN	20(16) x 2 000 x 10 000 mm	4 mm	23.86 kg/m ²
549 1644	REMALINE MP 60/CN	25(21) x 2 000 x 10 000 mm	4 mm	29.68 kg/m ²
549 1645	REMALINE MP 60/CN	50(40) x 2 000 x 10 000 mm	10 mm	59.22 kg/m ²

Special properties*

REMALINE 60/EP160
Fabric reinforced lining for protection against impact wear.

*Special properties available upon request.

WEAR PROTECTION LINING
REMALINE – High-quality rubber lining material

REMALINE 70 – Premium quality for tough wear situations

REMALINE 70 is a material featuring especially excellent resistance to abrasion. REMALINE 70 is the material of choice for applications with extremely high wear and impact. Due to its high tear resistance and tensile strength, REMALINE 70 is especially suitable for equipment used to convey large-particle, broken and sharp-edged material.



REMALINE 70

Properties

- Superior resistance to wear
- Excellent resistance to abrasion
- Extremely high tensile strength
- Good weather resistance
- CN bonding layer provides fast and long-lasting adhesion

Area of application

- Material transfer points, chutes, bunkers and slides
- Lining for truck bodies, impact curtains and vibrating conveyors
- Lagging for non-driven pulleys with moderate to high belt tension
- Cold refurbishing of conveyor belts
- Mill lining

REMALINE 70/CN

Specifications

Polymer basis	NR/BR	DIN ISO 1629
Specific weight	1.09 g/cm ³	DIN EN ISO 1183-1
Hardness	63 Shore A	DIN ISO 7619-1
Colour	Black	

Ref. No.	Designation	Dimensions	Weight
549 3210	REMALINE 70/CN	3x1500x10 000 mm	4.14 kg/m ²
549 9100	REMALINE 70/CN	5x2000x10 000 mm	6.30 kg/m ²
549 9110	REMALINE 70/CN	6x2000x10 000 mm	7.25 kg/m ²
549 3289	REMALINE 70/CN	8x2000x10 000 mm	9.24 kg/m ²
549 3313	REMALINE 70/CN	10x2000x10 000 mm	11.90 kg/m ²
549 3337	REMALINE 70/CN	12x2000x10 000 mm	14.04 kg/m ²
549 3351	REMALINE 70/CN	15x2000x10 000 mm	17.40 kg/m ²
549 3375	REMALINE 70/CN	20x2000x10 000 mm	23.20 kg/m ²
549 3399	REMALINE 70/CN	25x2000x10 000 mm	28.75 kg/m ²
549 3416	REMALINE 70/CN	30x2000x10 000 mm	34.50 kg/m ²
549 3430	REMALINE 70/CN	40x2000x5000 mm	46.00 kg/m ²
549 3454	REMALINE 70/CN	50x2000x5000 mm	57.50 kg/m ²

Special properties*

REMALINE 60/EP160
Fabric reinforced lining for protection against impact wear.

REMALINE 70 OIL
The oil and grease resistant premium quality for tough wear situations.

REMALINE 70 OIL/EP160
The fabric reinforced, oil and grease resistant premium quality for tough wear situations.

REMALINE 70 V
The self-extinguishing premium quality for tough wear situations.

REMALINE 70 HR
The heat resistant premium quality for tough wear situations.

REMALINE 70 WHITE OIL FOOD
The oil and grease resistant premium food quality for tough wear situations.

*Special properties available upon request.

WEAR PROTECTION LINING
REMASTAR – High wear-resistance TPU lining material

REMASTAR – Premium quality with extreme abrasion resistance

REMASTAR is a combination of thermoplastic polyurethane and rubber and features new and significantly improved features compared to existing lining materials. REMASTAR provides excellent resistance to wear caused by cutting and grooving and remains flexible even at low temperatures. The material is resistant to oils, grease and many solvents and also to ageing.



REMASTAR

Properties

- Excellent abrasion resistance
- High resistance to wear caused by cutting and grooving
- Resistant to oils, grease and many solvents
- Remains flexible even at low temperatures
- CN bonding layer provides fast and lasting adhesion

Area of application

- Lining of vibration chutes, slides, silos, bunkers
- Wear protection of magnetic belts

REMASTAR

Base: Rubber with CN bonding layer, 1 mm

Specifications

Polymer basis	TPU	DIN ISO 1629
Specific weight	1.20 g/cm ³	DIN EN ISO 1183-1
Hardness	85 Shore A	DIN ISO 7619-1
Colour	Red	

Ref. No.	Designation	Dimensions	Weight
549 4482	REMASTAR/CN	6 x 1 500 x 10 000 mm	7.4 kg/m ²

WEAR PROTECTION LINING
UNILINE – Rubber lining material

UNILINE 40 RED – Lining for wet wear applications

UNILINE 40 RED is the economical wear protection solution for a variety of applications. The UNILINE 40 RED is designed to be used in wet applications with a good resistance to tearing.



UNILINE 40 RED

Properties

- Wear-resistant
- Good elasticity
- Green contact layer (KS)

Area of application

- Protection against minor, wet wear

UNILINE 40 RED/KS

Specifications

Polymer basis	NR	DIN ISO 1629
Hardness	45 Shore A	DIN 53 505
Colour	Red	

Ref. No.	Designation	Dimensions	Weight
550 3503	UNILINE 40/KS	3 x 1 500 x 10 000 mm	3.75 kg/m ²
550 3433	UNILINE 40/KS	4 x 2 000 x 10 000 mm	4.96 kg/m ²
550 3432	UNILINE 40/KS	5 x 2 000 x 10 000 mm	6.50 kg/m ²
550 3421	UNILINE 40/KS	6 x 2 000 x 10 000 mm	7.25 kg/m ²
550 3446	UNILINE 40/KS	8 x 2 000 x 10 000 mm	9.49 kg/m ²
550 3453	UNILINE 40/KS	10 x 2 000 x 10 000 mm	11.87 kg/m ²
550 3540	UNILINE 40/KS	12 x 2 000 x 10 000 mm	14.11 kg/m ²
550 3479	UNILINE 40/KS	15 x 2 000 x 10 000 mm	17.64 kg/m ²
550 3486	UNILINE 40/KS	20 x 2 000 x 10 000 mm	23.31 kg/m ²
550 3493	UNILINE 40/KS	25 x 2 000 x 10 000 mm	29.14 kg/m ²
550 3449	UNILINE 40/KS	8 x 1 500 x 10 000 mm	9.49 kg/m ²
550 3456	UNILINE 40/KS	10 x 1 500 x 10 000 mm	11.87 kg/m ²
550 3480	UNILINE 40/KS	15 x 1 500 x 10 000 mm	17.64 kg/m ²

WEAR PROTECTION LINING
UNILINE – Rubber lining material

UNILINE 60 – Lining for dry wear applications

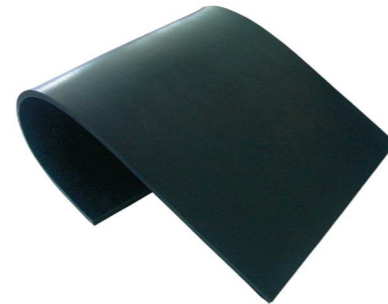
UNILINE 60 is designed to be used in dry applications with good resistance to abrasion and impact.

Properties

- Wear-resistant
- Good tear growth resistance
- Green contact layer (KS)

Area of application

- Protection against minor, dry wear



UNILINE 60

UNILINE 60/KS

Specifications

Polymer basis	NR/BR/SBR	DIN ISO 1629
Hardness	61 Shore A	DIN ISO 7619-1
Colour	Black	
FRAS approval	VH60	

Ref. No.	Designation	Dimensions	Weight
550 3351	UNILINE 60/KS	3 x 1 500 x 10 000 mm	3.97 kg/m ²
550 7520	UNILINE 60/KS	5 x 2 000 x 10 000 mm	6.51 kg/m ²
550 3280	UNILINE 60/KS	6 x 2 000 x 10 000 mm	7.81 kg/m ²
550 3296	UNILINE 60/KS	8 x 2 000 x 10 000 mm	10.33 kg/m ²
550 3306	UNILINE 60/KS	10 x 2 000 x 10 000 mm	12.92 kg/m ²
550 3313	UNILINE 60/KS	12 x 2 000 x 10 000 mm	15.37 kg/m ²
550 3320	UNILINE 60/KS	15 x 2 000 x 10 000 mm	19.22 kg/m ²
550 3337	UNILINE 60/KS	20 x 2 000 x 10 000 mm	25.62 kg/m ²
550 3344	UNILINE 60/KS	25 x 2 000 x 10 000 mm	32.03 kg/m ²
550 3920	UNILINE 60/KS	30 x 2 000 x 10 000 mm	38.43 kg/m ²
550 3270	UNILINE 60/KS	40 x 2 000 x 5 000 mm	50.82 kg/m ²
550 3260	UNILINE 60/KS	50 x 2 000 x 5 000 mm	63.53 kg/m ²
550 3302	UNILINE 60/KS	8 x 1 500 x 10 000 mm	10.33 kg/m ²
550 3310	UNILINE 60/KS	10 x 1 500 x 10 000 mm	12.92 kg/m ²
550 3322	UNILINE 60/KS	15 x 1 500 x 10 000 mm	19.22 kg/m ²

WEAR PROTECTION LINING
REMATHAN – High-quality polyurethane lining material

REMATHAN G 65/CN – High quality polyurethane lining material

REMATHAN premium wear protection plates are a convincing choice thanks to their extremely high wear resistance and their excellent resistance to oil and grease.

Properties

- High resistance to wear
- Oil and grease resistant
- Resists hydrolysis
- Resists microbes
- High impact elasticity
- High notch value
- Temperature range from -30°C to +80°C
- CN bonding layer provides fast and lasting adhesion

Area of application

- Oil, grease and wear-resistant lining
- Prevents caking and noise
- Slides and chutes
- Slip ground containers
- Grain applications



REMATHAN G 65/CN

REMATHAN G 65/CN

Specifications

Polymer basis	PUR	DIN ISO 1629
Specific weight	1.22 g/cm ³	DIN EN ISO 1183-1
Hardness	65 Shore A	DIN ISO 7619-1
Colour	Green	

Ref. No.	Designation	Dimensions
573 2287	REMATHAN G 65/CN	10 x 1 400 x 10 000 mm
573 2294	REMATHAN G 65/CN	15 x 1 400 x 10 000 mm
573 2304	REMATHAN G 65/CN	20 x 1 400 x 10 000 mm

WEAR PROTECTION LINING
REMATHAN – High-quality polyurethane lining material

REMATHAN G 75/CN – High quality polyurethane lining material

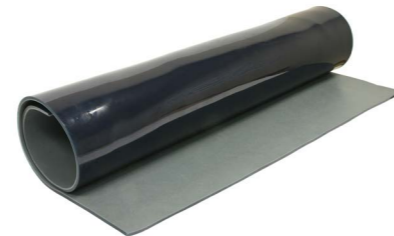
REMATHAN premium wear protection plates are a convincing choice thanks to their extremely high wear resistance and their excellent resistance to oil and grease.

Properties

- Excellent resistance to wear
- Oil and grease resistant
- Resists hydrolysis
- Resists microbes
- High impact elasticity
- High notch value
- Temperature range from -30°C to +80°C
- CN bonding layer provides fast and lasting adhesion

Area of application

- Oil, grease and wear-resistant lining
- Prevents caking and noise
- Slides and chutes
- Slip ground containers
- Concrete discharge chutes
- Grain applications



REMATHAN G 75/CN

REMATHAN G 75/CN

Specifications

Polymer basis	PUR	DIN ISO 1629
Specific weight	1.22 g/cm ³	DIN EN ISO 1183-1
Hardness	75 Shore A	DIN ISO 7619-1
Colour	Green	

Ref. No.	Designation	Dimensions
573 0087	REMATHAN G 75/CN	4 x 1 400 x 10 000 mm
573 2328	REMATHAN G 75/CN	6 x 1 400 x 10 000 mm
573 2335	REMATHAN G 75/CN	8 x 1 400 x 10 000 mm
573 2342	REMATHAN G 75/CN	10 x 1 400 x 10 000 mm
573 2359	REMATHAN G 75/CN	15 x 1 400 x 10 000 mm
573 2366	REMATHAN G 75/CN	20 x 1 400 x 10 000 mm

WEAR PROTECTION LINING
REMATHAN – High-quality polyurethane lining material

REMATHAN G 90/CN – High quality polyurethane lining material

REMATHAN premium wear protection plates are a convincing choice thanks to their extremely high wear resistance and their excellent resistance to oil and grease.

Properties

- High resistance to wear
- Oil and grease resistant
- Resists hydrolysis
- Resists microbes
- High impact elasticity
- High notch value
- Temperature range from -30°C to +80°C
- CN bonding layer provides fast and lasting adhesion

Area of application

- Oil, grease and wear-resistant lining
- Prevents caking and noise
- Slides and chutes
- Concrete discharge chutes
- Grain applications



REMATHAN G 90/CN

REMATHAN G 90/CN

Specifications

Polymer basis	PUR	DIN ISO 1629
Specific weight	1.23 g/cm ³	DIN EN ISO 1183-1
Hardness	90 Shore A	DIN ISO 7619-1
Colour	Green	

Ref. No.	Designation	Dimensions
573 2380	REMATHAN G 90/CN	6 x 1 400 x 10 000 mm
573 2407	REMATHAN G 90/CN	10 x 1 400 x 10 000 mm
573 2060	REMATHAN G 90/CN	20 x 1 000 x 2 000 mm

WEAR PROTECTION LINING

REMATHAN – High-quality polyurethane lining material

REMATHAN G 80 FDA/CN – High-quality polyurethane lining material for use in the food industry

REMATHAN premium wear protection plates are a convincing choice due to their extremely high wear-resistance and their excellent resistance to oil and grease. With their special properties REMATHAN offers optimum protection for machines and systems and thus ensuring a longer service life. The REMATHAN FDA quality can be used for contact with dry, aqueous and fatty foods for contact times of up to 30 minutes and at a maximum of 70°C. The material has been tested and approved in accordance with FDA and European Union regulations.

Properties

- Approved under FDA (FDA CFR 21§ 177.2600)
- Approved under (VO (EG) 1935/2004, VO (EU) 10/2011)
- Operating temperature up to 70°C
- High resistance to wear
- Oil and grease resistant
- CN bonding layer provides fast and longlasting adhesion

Area of application

- Oil, grease and wear-resistant lining
- Prevents caking and noise
- Chutes and slides
- Loading facilities
- Food industry
- Grain applications

REMATHAN G 80 FDA/CN

Specifications

Polymer basis	PUR	DIN ISO 1629
Specific weight	1.21 g/cm ³	DIN EN ISO 1183-1
Hardness	85 Shore A	DIN ISO 7619-1
Colour	Blue	

Ref. No.	Designation	Dimensions
573 2195	REMATHAN G80 FDA/CN	4 x 1 400 x 10 000 mm
573 2194	REMATHAN G80 FDA/CN	6 x 1 400 x 10 000 mm
573 2196	REMATHAN G80 FDA/CN	8 x 1 400 x 10 000 mm
573 2193	REMATHAN G80 FDA/CN	10 x 1 400 x 10 000 mm
573 2197	REMATHAN G80 FDA/CN	15 x 1 400 x 10 000 mm
573 2198	REMATHAN G80 FDA/CN	20 x 1 400 x 10 000 mm

WEAR PROTECTION LINING

REMATHAN – High-quality polyurethane lining material

REMATHAN G 75 LB – High-quality polyurethane lining material with perforated metal insert

REMATHAN premium wear protection plates are a convincing choice due to their extremely high wear-resistance and their excellent resistance to oil and grease. With their special properties REMATHAN offers optimum protection for machines and systems and thus a longer service life. Due to the perforated metal insert, the REMATHAN product is strengthened and can be easily and safely bolted. The REMATHAN plates can be cut to the right dimensions directly on your construction site.

Properties

- High resistance to wear
- Oil and grease resistant
- Resists hydrolysis
- Resists microbes
- High impact elasticity
- High notch value
- Temperature range from -30°C to +70°C
- Reinforced by perforated metal insert
- Easy to screw

Area of application

- Oil, grease and wear-resistant lining
- Prevents caking and noise
- Chutes and slides
- Concrete discharge funnels and transfer points
- Impact elements
- Component linings
- Grain applications

REMATHAN G 75 LB

Specifications

Polymer basis	PUR	DIN ISO 1629
Specific weight	1.23 g/cm ³	DIN EN ISO 1183-1
Hardness	75 Shore A	DIN ISO 7619-1
Colour	Green	

Ref. No.	Designation	Dimensions
573 1043	REMATHAN G75 LB	8 x 1 000 x 2 000 mm
573 1044	REMATHAN G75 LB	10 x 1 000 x 2 000 mm
573 1045	REMATHAN G75 LB	12 x 1 000 x 2 000 mm
573 1046	REMATHAN G75 LB	15 x 1 000 x 2 000 mm
573 1047	REMATHAN G75 LB	20 x 1 000 x 2 000 mm
573 1049	REMATHAN G75 LB	30 x 1 000 x 2 000 mm

NATURAL AND SYNTHETIC RUBBER –
TYPICAL CHARACTERISTICS

NOTES

Abbreviation according to DIN ISO 1629	Designation	General Characteristics of Vulcanized Rubber	Operating Temperatures (°C)	
			longer periods	short periods
NR	Natural Rubber	Multi purpose rubber with the most balanced characteristics (high tensile strength, elasticity and resistance to wear). Moderate resistance against ozone (light colors only). Not resistant against oil, grease and fuel.	-30 to +80	-55 to +90
IR	Isoprene Rubber	see NR		
BR	Butadiene Rubber	Only used for blends with other elastomers (NR, IR, SBR). Very high abrasion-resistance and high elasticity.	-40 to +100	-60 to +110
CR	Chloroprene Rubber	High flame resistance, good resistance against chemicals, ozone and ageing. Moderate resistance against oil and grease.	-25 to +90	-30 to +110
SBR	Styrene Butadiene Rubber	High tensile strength and abrasion-resistance. Moderate to good resistance against ozone, ageing. Not resistant against oil and grease.	-25 to +90	-30 to +100
NBR	Nitrile Rubber	Special rubber with high resistance against mineral oil, grease and fuel. Moderate to good resistance against ozone and ageing (light colors only).	-25 to +100	-35 to +120
IIR	Butyl Rubber	Special rubber with low air permeability and excellent dampening properties. Good resistance against heat. Not resistant against oil, grease and fuel.	-30 to +120	-40 to +140
CIIR BIIR	Chlorbutyl / Brombutyl Rubber	Special rubber with high chemical resistance (acids, alkaline solutions). Good resistance against heat and ozone. High resistance against water vapors. Not resistant against oil, grease and fuel.	-40 to +100	-40 to +120
AU	Polyurethane	Very good abrasion-resistance. Good resistance against mineral oil, grease and fuel. High elasticity.	-30 to +80	-30 to +80
CSM	Chlorosulfonated Polyethylen	Excellent resistance against ozone and weathering. Good resistance against oxidizing chemicals (chromic acid, hypochlorite). Good resistance against mineral oil and fuel. Electrically insulating.	-20 to +100	-20 to +120

This is general information. In specific cases we recommend you to seek for technical application advice regarding stresses caused by temperature, ozone, media dynamic and static forces, tension, distension or any other influences. Instruction or operation manuals and product information have to be taken notice of.

LEGAL NOTICE

Copyright © 2020 REMA TIP TOP AG

All information is given to the best of our knowledge. All specifications are to be considered non-binding information. Any claim for damages of any kind is excluded. We reserve the right to change technical specifications without prior notice, provided that they ensure product improvement. The information presented is based on technical experience but does not guarantee a product's suitability for specific applications, and does not relieve the users of the responsibility to undertake their own testing, including where any third-party trademark rights are concerned. For special applications and operating conditions with regard to temperature, UV light, ozone, acids and alkaline solutions, dynamic and static forces, tensions, elongations and other influences, contact your local REMA TIP TOP distributor for technical advice.

Operating and working instructions, product information and general instructions on the vulcanization properties of natural and synthetic rubber should be followed carefully. The mechanical and physical values presented for our products only apply to the material listed (without bonding layer and without fabric) based on the accompanying inspections for approval; these represent statistical product data, but not guaranteed product properties. Detailed technical data sheets for each single product are available upon request. The weight indications (kg/m², kg/m, etc.) solely represent statistical values and are not necessarily identical to the actual weights. The weights indicated are merely guidelines for the handling, transport and application of our products. The dimension tolerances are based on part 5 of DIN 7715, classification P3 (admissible dimension tolerances for sheets) and DIN ISO 3302-1, classification M4 (molded parts made of soft-rubber). Other tolerances of specific products for special applications are subject to a mutual agreement and must be stipulated in a special contract. Products containing hazardous substances are labeled in accordance with the regulations (EG) No. 1907/2006 for the


classification, packaging and labeling of hazardous materials and preparations.

In order to preserve product properties, the storage conditions indicated in DIN 7716 should be followed (including storing the product in the original package and in an area that is dry, cool and dark).

Products printed in bold are normally available from stock.

Talk to our team today

 sales@rema-tiptop.com.au

 rema-tiptop.com.au

 **Beresfield (Head Office)**

02 4935 0200
79 Elwell Close,
Beresfield, NSW 2322

Brisbane

07 3710 8833
52 Wentworth Place,
Northgate, QLD 4014

Mackay

07 4953 9100
29-33 Maggiolo Drive,
Paget, QLD 4740

Perth

08 6253 1900
102 Kurnall Road,
Welshpool, WA 6106

Dandenong

03 8786 3333
2 Venture Court,
Dandenong South, VIC 3175

Adelaide

08 8169 2850
11 Lafitte Road,
Wingfield, SA 5013

Newman

08 6253 1900
21 Pardoo Street,
Newman, WA 6753

Gladstone

07 3710 8820
3 McCabe Street,
Gladstone, QLD 4680



// ONE BRAND // ONE SOURCE // ONE SYSTEM