


OPENHAUS

REMA TIP TOP VIRTUAL EXHIBITION SERIES

**Optimising your plant to increase
asset profitability**

 30.09.20 - 02.12.20

 rema-tiptop.com.au/openhaus

AGENDA



Welcome to OPENHAUS

Join us for an engaging online web series as we explore the latest thinking in extending the life of assets in traditional soft and hard rock applications along with other discrete industries. These live sessions will explore some of the most challenging, destructive and also the most specialist industrial applications around the world where REMA TIP TOP has the expertise to increase availability, reduce downtime, improve yield and drive overall operational profitability.

From an overview of REMA TIP TOP's broader capabilities, then drilling down into key focus areas including conveyor componentry and newly developed advanced condition monitoring technologies, the six-part series will provide real-world insights into the challenges facing operators across a range of industries.

Fundamental to OPENHAUS, is the focus on enabling businesses to extend the life of assets, improve yield and drive overall profitability, with reviews of both contemporary and future technology-based approaches.

From belt selection, repair materials, rubber lining and surface protection through to choosing the right componentry to optimise throughput, the interactive series takes a deep dive with leading industry experts examining scenarios across a range of industries including mining, construction, quarrying, water treatment and even food & beverage applications.



Michel Ciepelinski
Chief Executive Officer
REMA TIP TOP Industry Australia

OPENHAUS

REMA TIP TOP VIRTUAL EXHIBITION SERIES

Sessions



Session 1

📅 30.09.20 | 13:00-14:00

Presented by Ben Gatzlaff
Head of Product Management

Session 2

📅 14.10.20 | 13:00-14:00

Presented by Mark Fishlock
Product Manager Adhesives & Repair Materials

Session 3

📅 28.10.20 | 13:00-14:00

Presented by Luke Sasse
Product Manager Technology

Welcome to REMA TIP TOP

An overview of REMA TIP TOP's capabilities in a range of industrial settings and the operational imperatives facing plant operators into 2021.

Ben will explore solutions in material processing settings and examine technologies for optimising conveyor operations across the entire value chain as well as providing a walk through of REMA TIP TOP's world renowned range of surface protection, heavy wear protection and corrosion protection products proven to extend asset life.

[REGISTER](#)

Keeping your belts moving

An exploration of traditional and contemporary belt repair materials providing operators with alternatives to extending plant life and reducing downtime.

Mark will demonstrate the technical and commercial benefits of REMA TIP TOP's extensive range of belt repair materials including REMAGoo and RG7000 as well as introducing a brand new, patented approach to belt repair and visual monitoring methodology providing conveyor operators with alternatives to traditional, costly belt shutdowns.

[REGISTER](#)

Conveyor technology delivering improved production yields

An introduction to the latest tools arming operators with predictive maintenance strategies through advanced condition monitoring designed to improve overall profitability.

Luke will present the latest technology providing belt operators with actionable information designed to extend the life of critical bulk materials handling infrastructure. From REMA TIP TOP's innovative MCube range, the session will explore the benefits of steel cord scanning to provide accurate, reliable and immediate detection of damaged cables and splice cord condition along with a review belt thickness monitoring designed to optimise belt life expectancy.

In a challenging economic landscape in which industrial operators are required to minimise downtime and contribute to increasing yield, this session is a must for operators in a range of settings.

[REGISTER](#)

Sessions



Session 4

📅 11.11.20 | 13:00-14:00

Presented by Joss Lynch Product Manager - Belt Cleaning Systems & Wade Richardson - Product Manager Conveyor Belting

Session 5

📅 25.11.20 | 13:00-14:00

Presented by Ben Gatzlaff
Head of Product Management

Session 6

📅 02.12.20 | 13:00-14:00

Presented by Ben Gatzlaff
Head of Product Management

Beyond the conveyor belt

Choosing the right belt for the right application and maximising your investment with right componentry

Wade and Joss will leverage their combined experience in this session to examine the process for selecting the right conveyor belt, but critically focus on navigating the process to select the right components to optimise conveyor infrastructure to deliver safe and reliable operations. Join this session to learn more about the role of rollers, cleaners and scrapers in a range of challenging industrial settings.

[REGISTER](#)

Protecting your assets from erosive or corrosive deterioration

Extending plant life using rubber lining in wet and dry process applications

Ben will perform a deep dive into a mix of industrial scenarios in which REMA TIP TOP's extensive range of first-class products can help defend critical assets against the destructive forces of erosion and corrosion. With in-depth reviews of PERFORMANCELINE, REMALINE, UNILINE and CHEMOLINE this session will provide new insights into the tools available to protect assets in mineral processing and other discrete industries.

[REGISTER](#)

Arming your plant with heavy wear protection against material impactors

A walkthrough of advanced technologies for protecting assets against abrasive media in the harshest of environments

Join Ben for an informative review of heavy wear protection alternatives for industrial operators. With a detailed review of REMA TIP TOP's ceramic and rubber lining materials including REMALOX, as well as modular systems which can be utilised to protect assets against the impacts of a range of wet and dry abrasive media from wear while also addressing key safety challenges including noise reduction.

[REGISTER](#)

Presenters

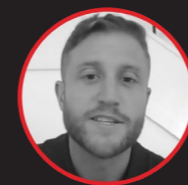


Ben Gatzlaff

Head of Product Management

Ben holds deep domain expertise in industrial settings around the world having spent the majority of his career based in Germany and also here in Australia. He has multiple years' experience in product management and was formerly the Global Product Manager for Heavy Wear Protection at REMA TIP TOP. Ben is not afraid of getting his hands dirty and is a solutions driven leader who focuses on the commercial and the practical application of specialist products to improve outcomes for his customers.

Now based full time here in Australia, following a range of secondments over the past 3 years, Ben leads all aspects of product management for both Surface Protection and Material Processing for REMA TIP TOP in the Asia Pacific region.



Joss Lynch

Product Manager Belt Cleaning Systems

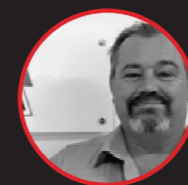
Joss understands the importance of selecting the right product for the right application in order to maximise plant availability and minimise downtime, with experience in shut down service and conveyor plant operations in mining, including seven years working FIFO to remote locations across WA. Joss is the youngest member of our product team based out of Wollongong and enjoys all things sport, wine and travel.



Mark Fishlock

Product Manager Corrosion Protection

Mark has extensive technical product experience, specializing in corrosion and wear applications within the mineral processing. He also has an immense knowledge of conveyor systems. Based out of Adelaide, Mark is the Rema Tip Top Product Manager for the Corrosion Protection, REMABond Systems and Repair Materials business throughout Australia, PNG, New Caledonia and New Zealand. His role is to provide the necessary technical support to our sales team and site managers to ensure they provide the correct solution to our end user customers.



Wade Richardson

Product Manager Conveyor Belting

Wade has over 36 years of experience working with conveyor belting, with extensive knowledge in conveyor belting types, conveyor components, conveyor manufacturing, conveyor transmission, rollers, frames, troughs and more. Wade is fully qualified in GR3 belt splicing including PVC, rubber, urethane, polyester, positive drive homogenous & modular design and install.



Luke Sasse

Product Manager Technology

Since graduating as a Mechatronic Engineer 15 years ago, Luke has worked in Technology & Automation in the mining industry, across Australia, the United Kingdom and the United States. Having led the development of REMA TIP TOP's digitised maintenance platform CARMA, Luke is now expanding REMA TIP TOP's global technology portfolio into the Australian market.



OPENHAUS

REMA TIP TOP VIRTUAL EXHIBITION SERIES

Register at:

rema-tiptop.com.au/openhaus